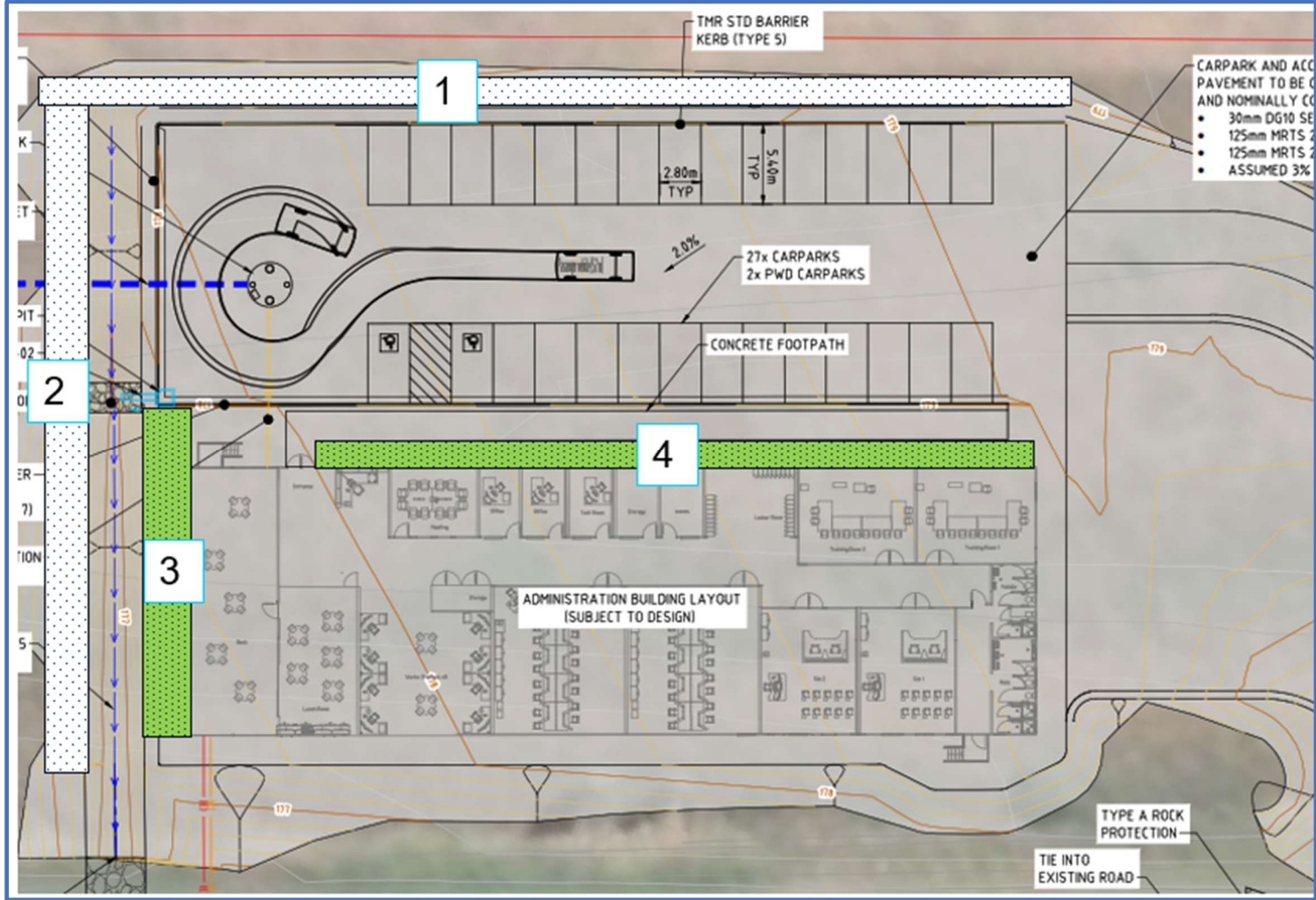


ACADEMY

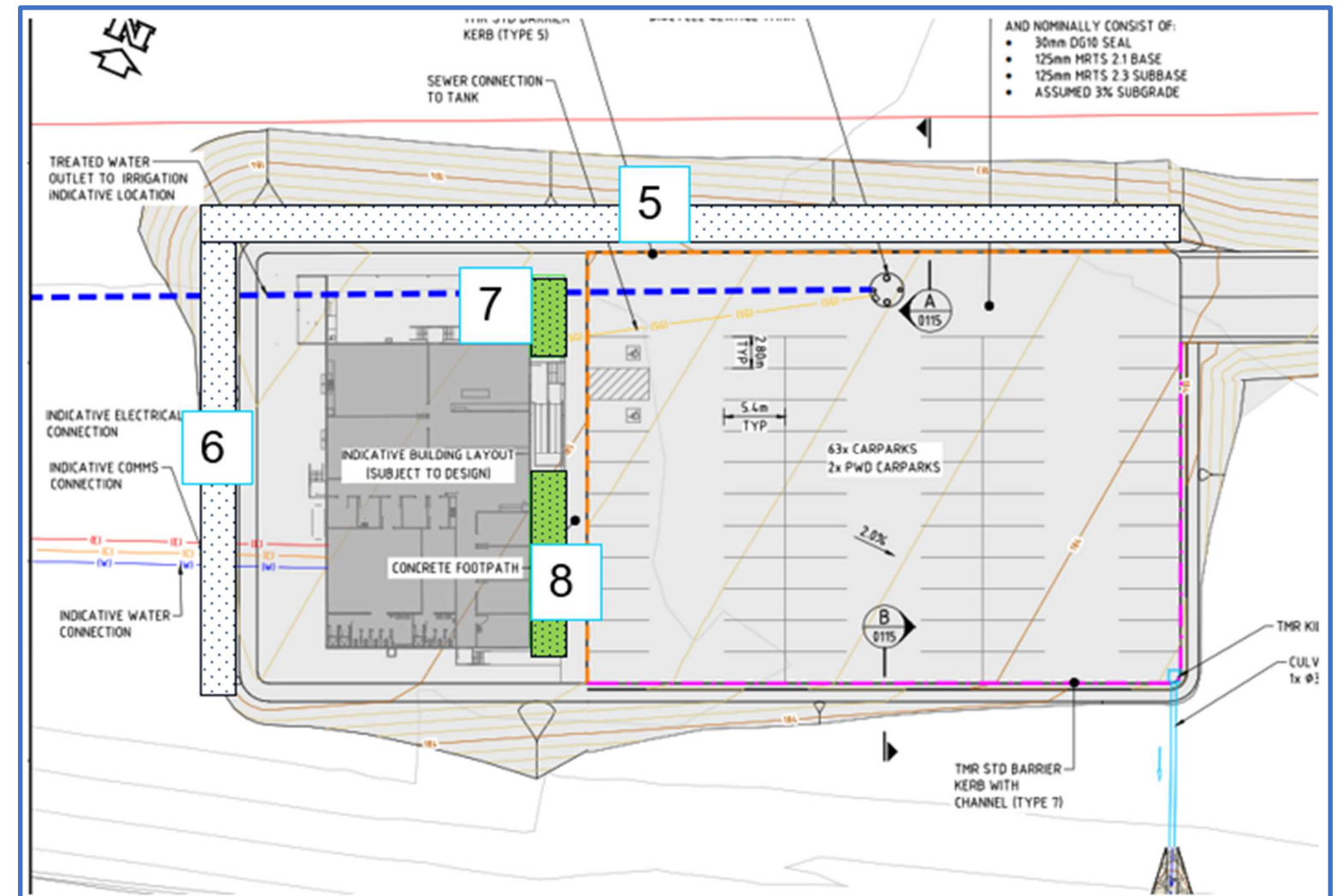
Areas	Details
1 – Row of trees (69 m in length)	<ul style="list-style-type: none">- One tree planted every 6-7 meters in a row- 11 trees total- Alternating: “Tuckeroo”, “Ivory Curl”, “Wilga” trees- These trees have been selected for shade and their appropriateness for the Nebo climate (drought tolerance, hardiness, visual appeal)
2 – Row of trees (45m in length)	<ul style="list-style-type: none">- One tree planted every 6-7 meters in a row- 7 trees total- Alternating: “Tuckeroo”, “Ivory Curl”, “Wilga” trees- These trees have been selected for shade and their appropriateness for the Nebo climate (drought tolerance, hardiness, visual appeal)
3 – landscaped garden (22m by 3m)	Per m2: 1 x Lomandra longifolia
4 – landscaped garden (46.5m by 1.9m)	1 x Dianella caerulea 2 x Myoporum parvifolium (ground cover) Mulch base



PROJECT: Asciano Properties Operations Pty Ltd			
Landscaping Plan	LOCALITY: Nebo	LOCAL GOVERNMENT: Isaac Regional	DATE: 23/06/2025
PROPERTY: Lot 50 SP239857, 23 Braeside Road,	DRAWN BY: KW	SHEET No: 1 of 3	FILE REFERENCE: 2024IRC063

TRAIN CREW FACILITY

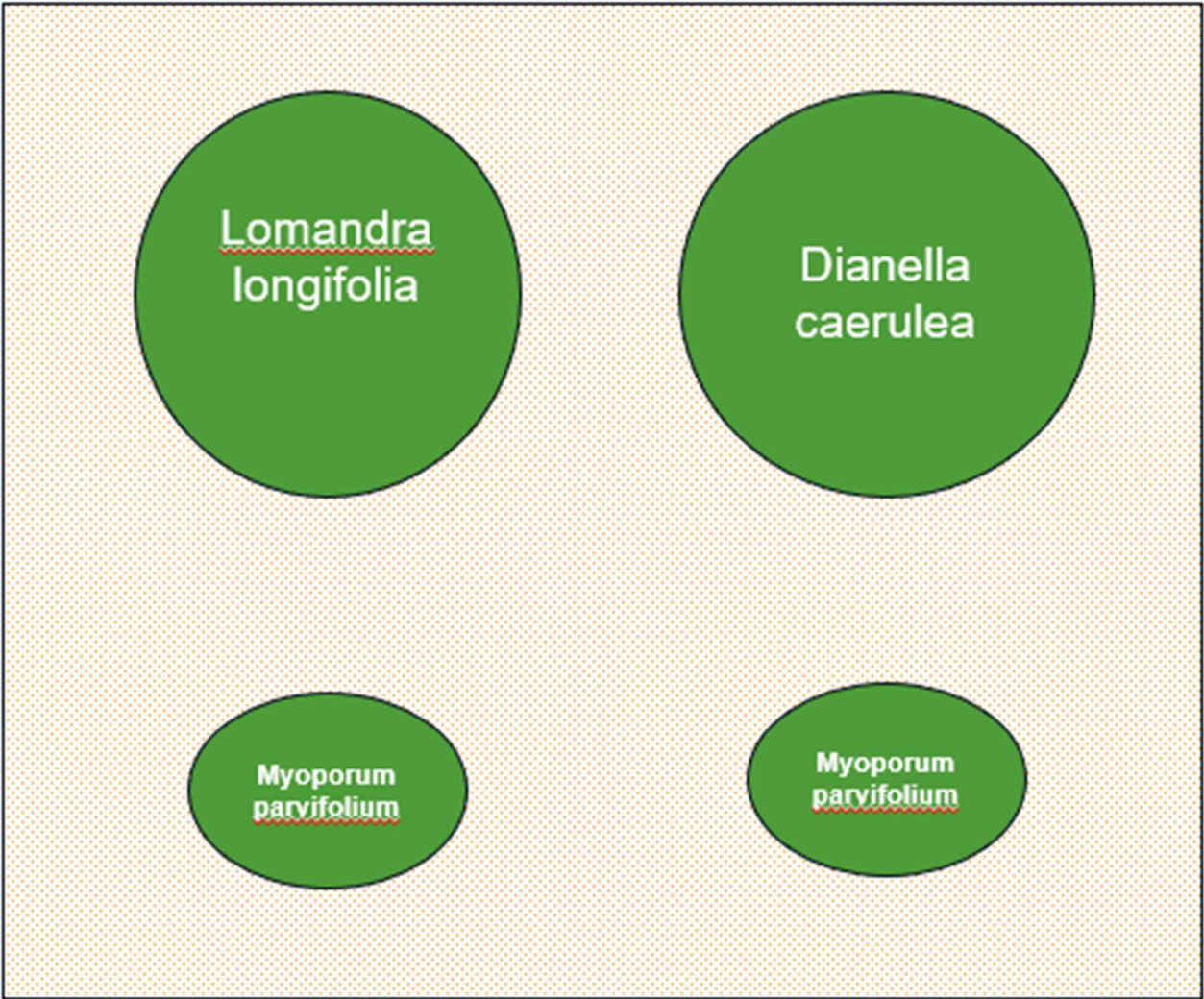
Areas	Details
5 – Row of trees (82 m in length)	<ul style="list-style-type: none"> - One tree planted every 6-7 meters in a row - 13 trees total - Alternating: “Tuckeroo”, “Ivory Curl”, “Wilga” trees - These trees have been selected for shade and their appropriateness for the Nebo climate (drought tolerance, hardiness, visual appeal)
6 – Row of trees (38m in length)	<ul style="list-style-type: none"> - One tree planted every 6-7 meters in a row - 7 trees total - Alternating: “Tuckeroo”, “Ivory Curl”, “Wilga” trees - These trees have been selected for shade and their appropriateness for the Nebo climate (drought tolerance, hardiness, visual appeal)
7 – landscaped garden (7m by 3m)	Per m2: 1 x Lomandra longifolia
8 – landscaped garden (15m by 3m)	1 x Dianella caerulea 2 x Myoporum parvifolium (ground cover) Mulch based



PROJECT: Asciano Properties Operations Pty Ltd			
Landscaping Plan	LOCALITY: Nebo	LOCAL GOVERNMENT: Isaac Regional	DATE: 23/06/2025
PROPERTY: Lot 50 SP239857, 23 Braeside Road,	DRAWN BY: KW	SHEET No: 2 of 3	FILE REFERENCE: 2024IRC063

Wynne Planning & Development PTY LTD
TOWN PLANNING SPECIALIST

Landscaped garden layout (per m2 for both Academy and TCF):



Plant (per m2)	Photo
<u>Lomandra longifolia</u> (Spiny-headed Mat-rush)	
<u>Dianella caerulea</u> (Blue Flax Lily)	
<u>Myoporum parvifolium</u> × 2 (Ground cover)	

PROJECT: Asciano Properties Operations Pty Ltd			
Landscaping Plan	LOCALITY: Nebo	LOCAL GOVERNMENT: Isaac Regional	DATE: 23/06/2025
PROPERTY: Lot 50 SP239857, 23 Braeside Road,	DRAWN BY: KW	SHEET No: 3 of 3	FILE REFERENCE: 2024IRC063