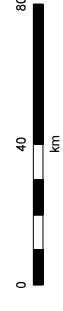


- Bushfire Hazard**
- Very High Potential Bushfire Intensity
 - High Potential Bushfire Intensity
 - Medium Potential Bushfire Intensity
 - Potential Impact Buffer
 - Cadastral Boundary
 - Local Government Boundary
 - Waterway
 - Major Roads
 - Railway Network

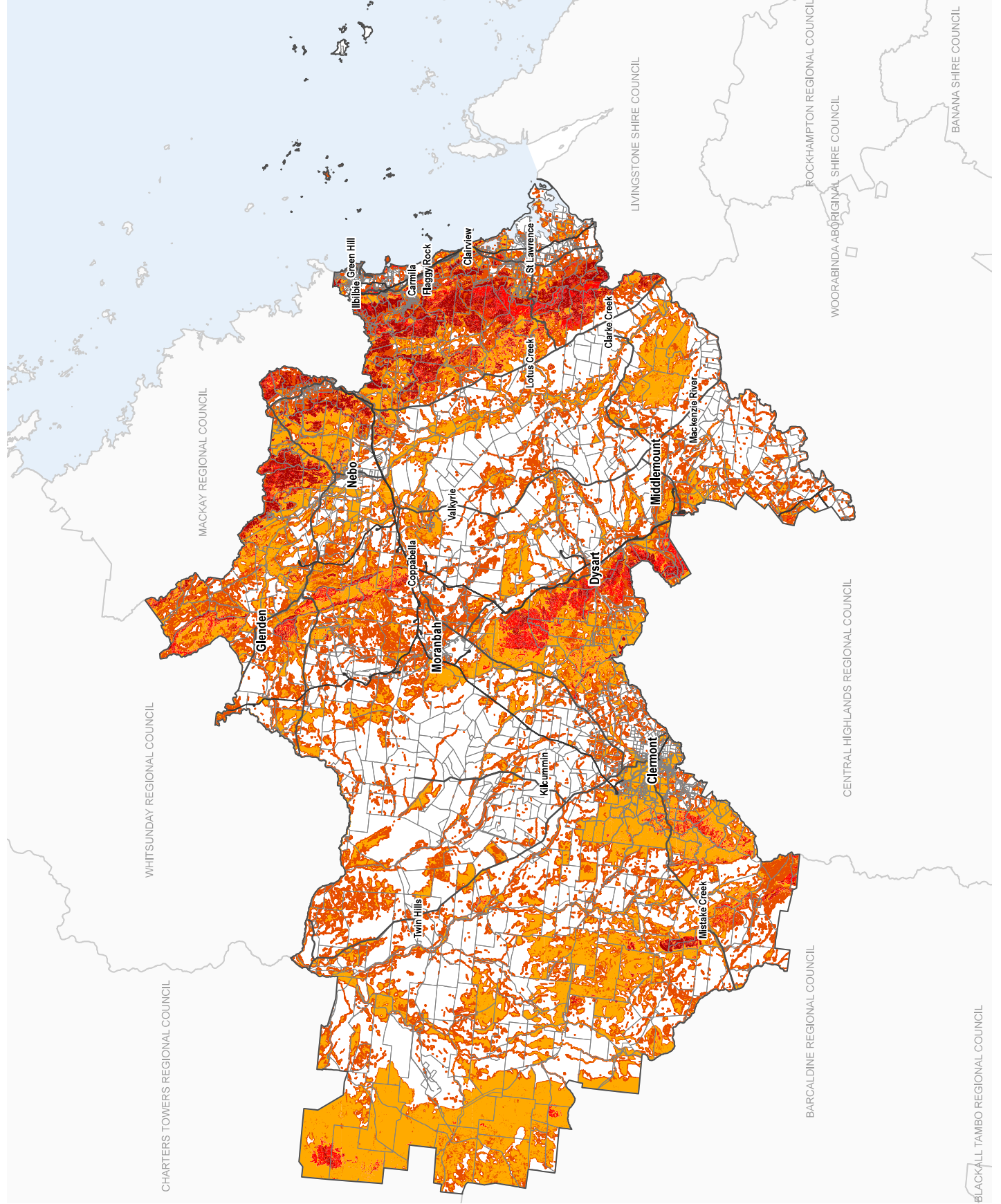
Note: Where overlays do not appear on the map, the overlay does not apply within the area.

DIGITAL CADASTRAL DATA BASE - BOUNDARY & TERRAIN INFORMATION.
 Based on or contains data provided by the State of Queensland (Department of Resources and Energy) and the State of Queensland (Department of Transport and Main Roads). The user acknowledges and agrees that the State gives no warranty in relation to the data (including accuracy, reliability, completeness, timeliness or suitability) for any use, storage or reuse (including consequential damage) relating to any use of the data. Data must not be used for direct marketing or be used in breach of the privacy laws.

Bushfire Hazard (Bushfire Prone Areas) as at September 2014
 Geospatial Datum of Australia (GDA94)
 Version: 1.0
 Gazetted Date: 01/04/2021
 Approx Scale @ A3 1:1,520,000



Sheet Index



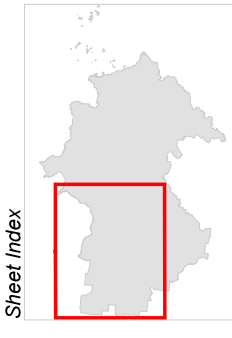
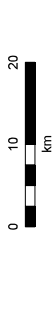
Isaac Regional
 Planning Scheme 2021
 Bushfire Hazard Overlay Map
 Rural Areas (north-west)

- Bushfire Hazard**
- Very High Potential Bushfire Intensity
 - High Potential Bushfire Intensity
 - Medium Potential Bushfire Intensity
 - Potential Impact Buffer
 - Cadastral Boundary
 - Local Government Boundary
 - Waterway
 - Major Roads
 - Railway Network

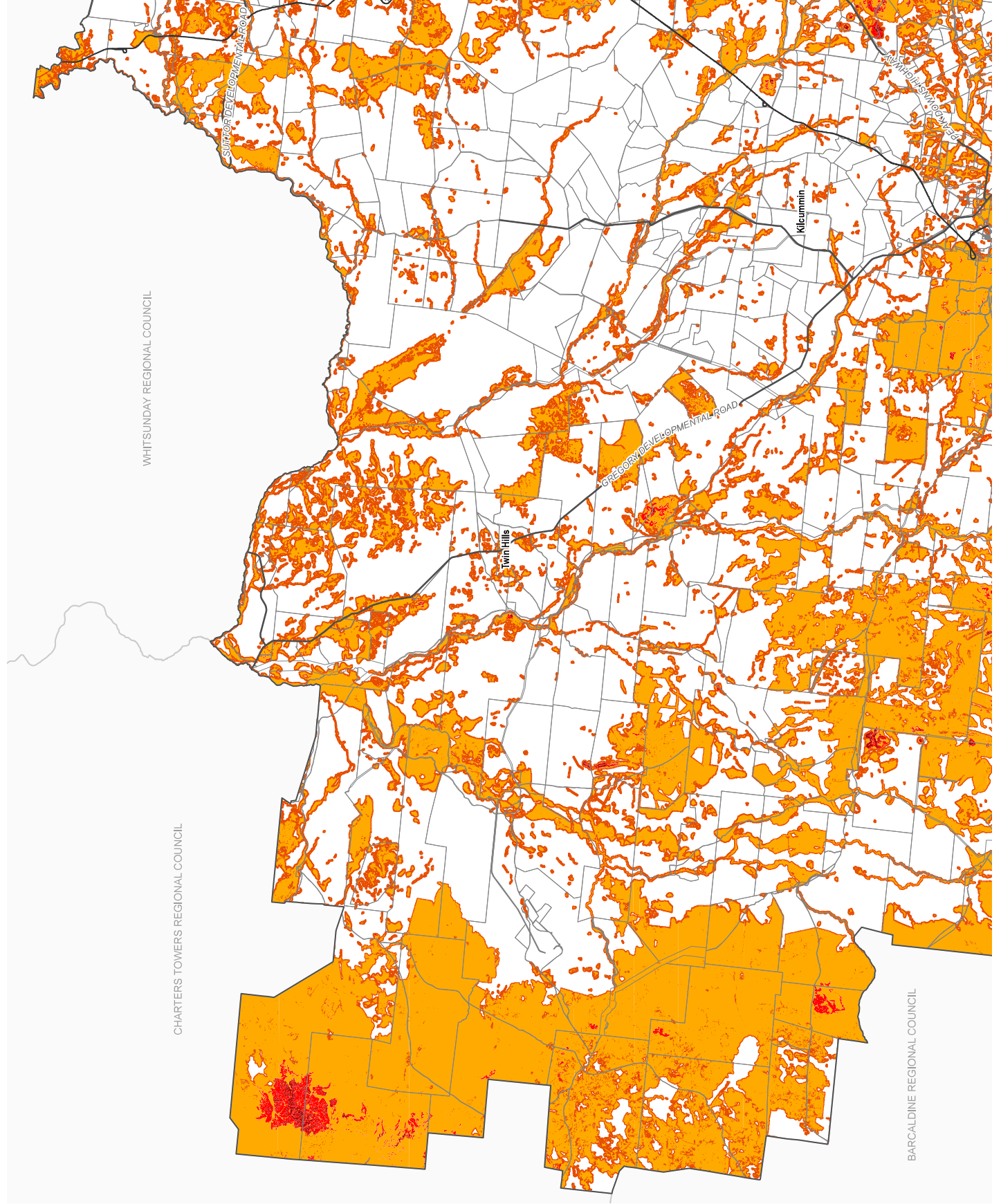
Note: Where overlays do not appear on the map, the overlay does not apply within the area.

DIGITAL CADASTRAL DATA BASE - BOUNDARY & TERRAIN INFORMATION.
 Based on or contains data provided by the State of Queensland (Department of Resources and Energy) and is provided for your information only. It is not intended for any purpose other than the permitted use of this data you acknowledge and agree that the State gives no warranty in relation to the data (including accuracy, reliability, completeness, timeliness or suitability) for any use, damage or costs (including consequential damage) relating to any use of the data. Data must not be used for direct marketing or be used in breach of the privacy laws.

Bushfire Hazard (Bushfire Prone Areas) as at September 2014
 Geospatial Datum of Australia (GDA94)
 Version: 1.0
 Gazetted Date: 01/04/2021
 Approx Scale @ A3: 1:650,000



**Bushfire Hazard - OM 4.1
 Rural Areas (north-west)**



**Isaac Regional
Planning Scheme 2021
Bushfire Hazard Overlay Map
Rural Areas (north-east)**

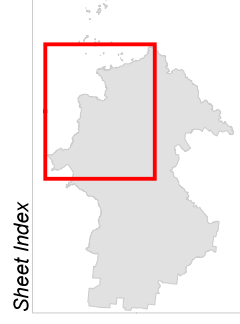
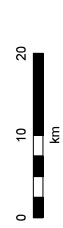
- Bushfire Hazard**
- Very High Potential Bushfire Intensity
 - High Potential Bushfire Intensity
 - Medium Potential Bushfire Intensity
 - Potential Impact Buffer
 - Cadastral Boundary
 - Local Government Boundary
 - Waterway
 - Major Roads
 - Railway Network

Note: Where overlays do not appear on the map, the overlay does not apply within the area.

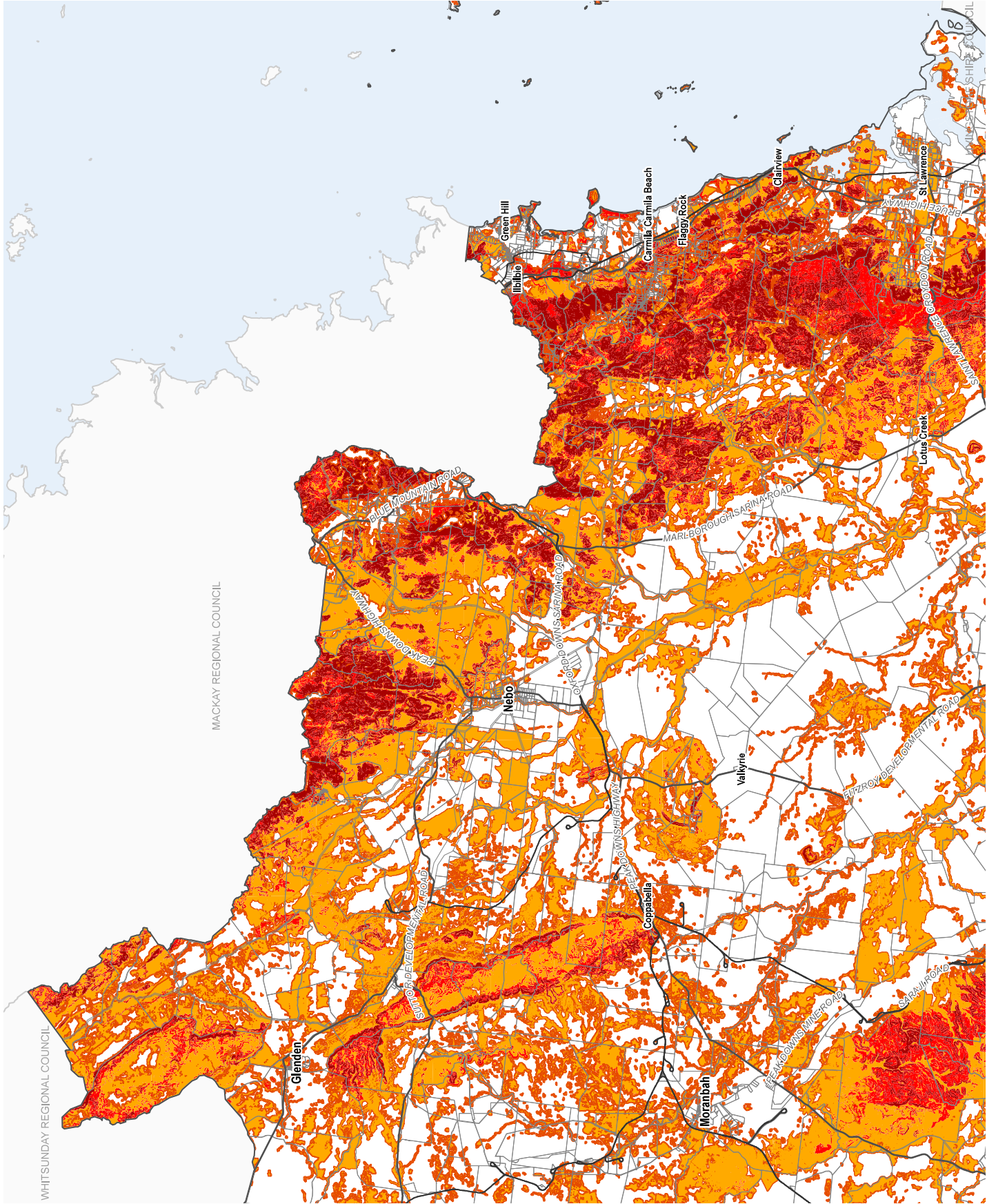
DIGITAL CADASTRAL DATA BASE - BOUNDARY & TERRAIN INFORMATION.
Based on or contains data provided by the State of Queensland (Department of Resources and Energy) for the purpose of the Isaac Regional Planning Scheme 2021. The State does not warrant the accuracy, reliability, completeness, timeliness or suitability for any use of the data (including any use of the data for purposes not intended by the State) or any liability for any loss, damage or costs (including consequential damage) relating to any use of the data. Data must not be used for direct marketing or be used in connection with the privacy laws.

Bushfire Hazard (Bushfire Hazard Areas) as at September 2014

Geometric Datum of Australia (GDA64)
Version: 1.0
Gazetted Date: 01/04/2021
Approx Scale @ A3: 1:650,000



**Bushfire Hazard - OM 4.2
Rural Areas (north-east)**



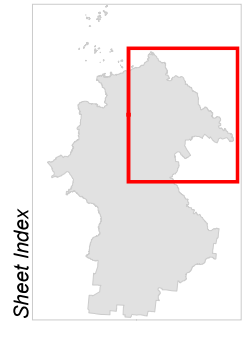
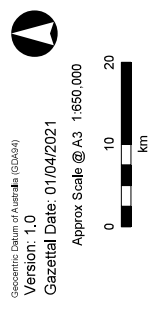
**Isaac Regional
Planning Scheme 2021
Bushfire Hazard Overlay Map
Rural Areas (south-east)**

- Bushfire Hazard**
- Very High Potential Bushfire Intensity
 - High Potential Bushfire Intensity
 - Medium Potential Bushfire Intensity
 - Potential Impact Buffer
 - Cadastral Boundary
 - Local Government Boundary
 - Waterway
 - Major Roads
 - Railway Network

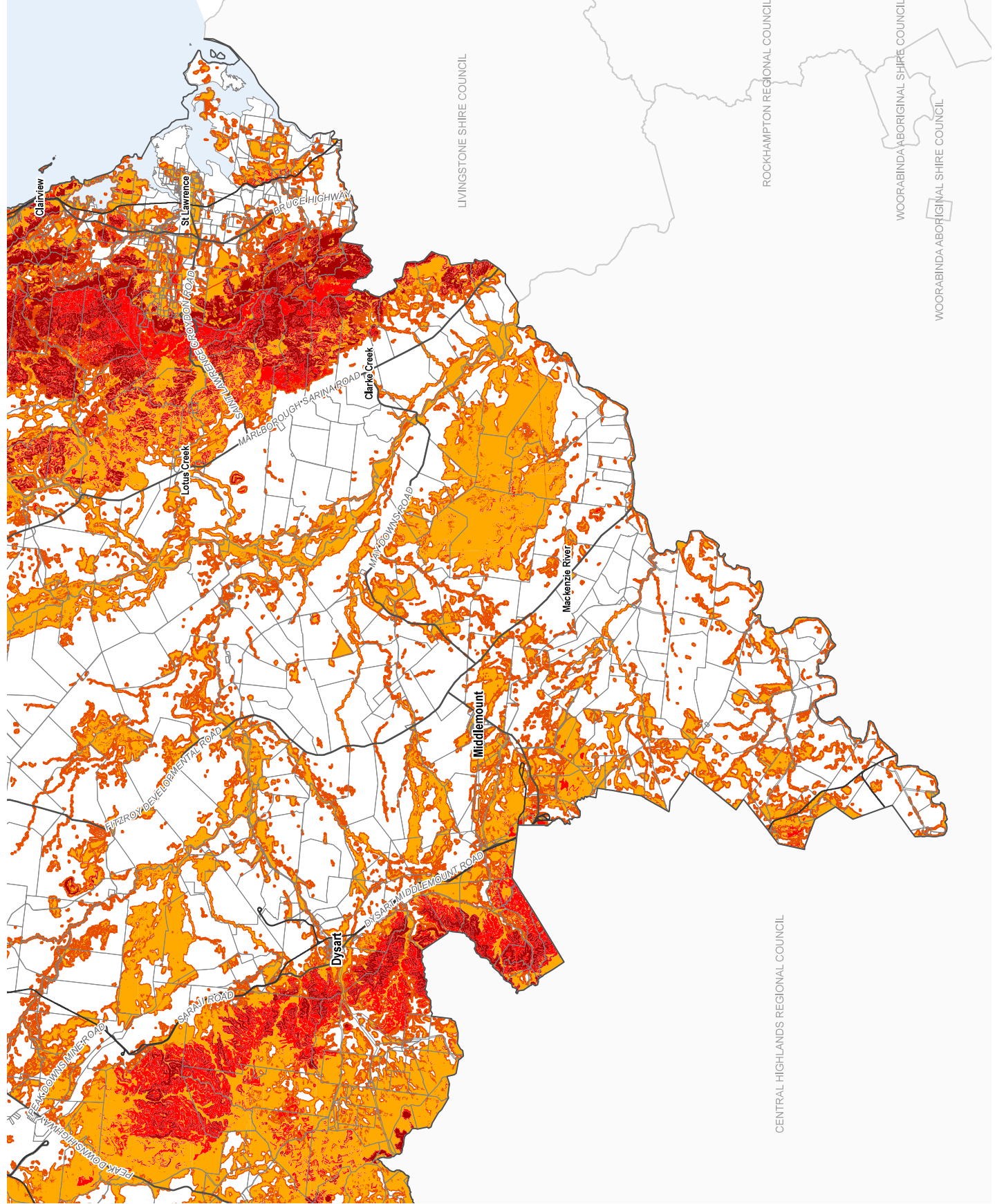
Note: Where overlays do not appear on the map, the overlay does not apply within the area.

DIGITAL CADASTRAL DATA BASE - BOUNDARY & TERRAIN INFORMATION.
Based on or contains data provided by the State of Queensland (Department of Resources and Energy) for the purpose of the planning scheme. The State gives no warranty in relation to the data (including accuracy, reliability, completeness, timeliness or suitability) for any use, including for any purposes (including consequential damage) relating to any use of the data. Data must not be used for direct marketing or be used in breach of the privacy laws.

Bushfire Hazard (Bushfire Prone Areas) as at September 2014
Geometric Datum of Australia (GDA64)
Version: 1.0
Gazetted Date: 01/04/2021
Approx Scale @ A3: 1:650,000

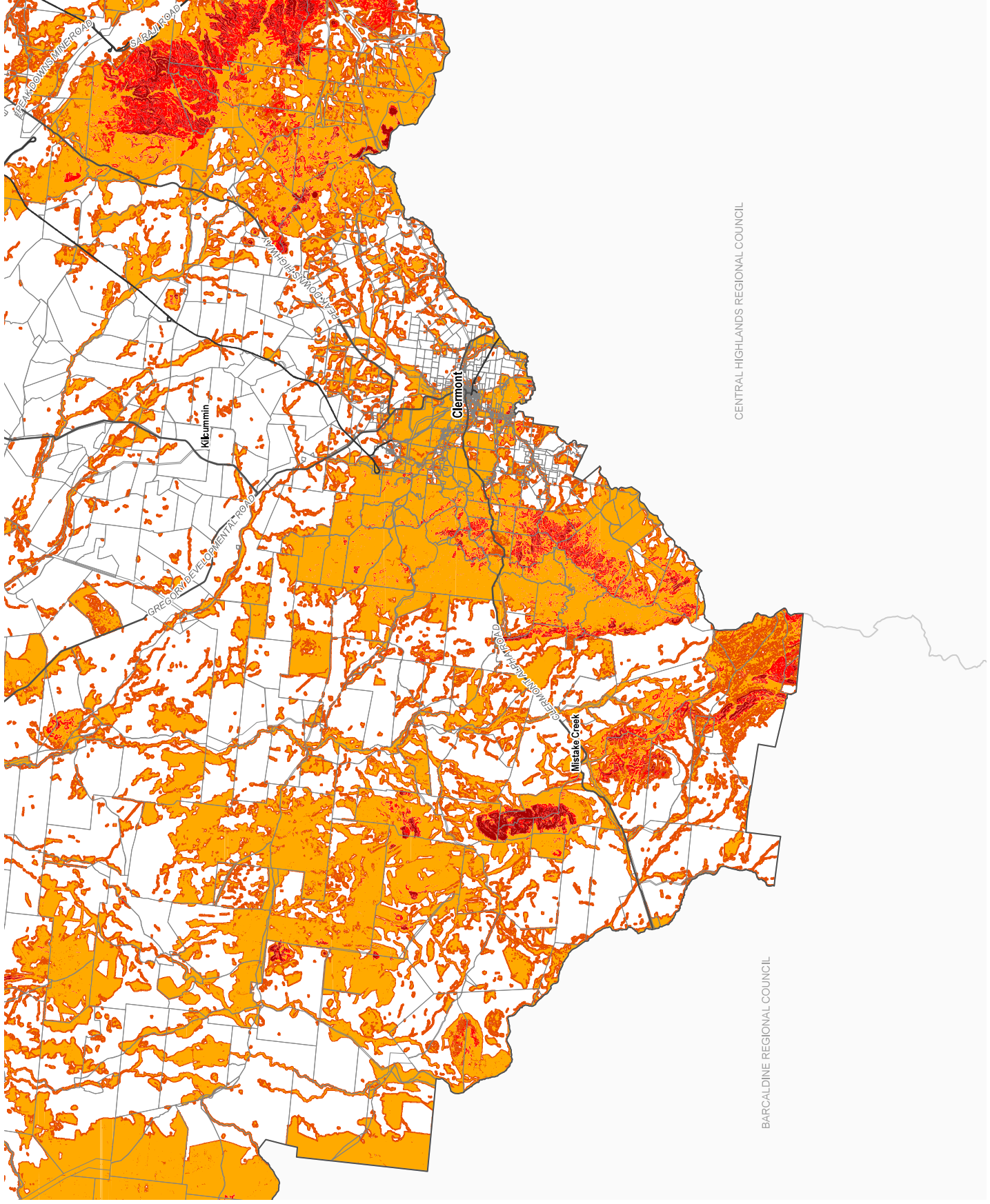


**Bushfire Hazard - OM 4.3
Rural Areas (south-east)**



**Isaac Regional
Planning Scheme 2021
Bushfire Hazard Overlay Map
Rural Areas (south-west)**

- Bushfire Hazard**
- Very High Potential Bushfire Intensity
 - High Potential Bushfire Intensity
 - Medium Potential Bushfire Intensity
 - Potential Impact Buffer
 - Cadastral Boundary
 - Local Government Boundary
 - Waterway
 - Major Roads
 - Railway Network



CENTRAL-HIGHLANDS REGIONAL COUNCIL

BARCALDINE REGIONAL COUNCIL

Note: Where overlays do not appear on the map, the overlay does not apply within the area.

DIGITAL CADASTRAL DATA - BOUNDARY & TERRAIN INFORMATION.
Based on or contains data provided by the State of Queensland (Department of Resources and Energy) and the State of Queensland (Department of Transport and Main Roads). The user acknowledges and agrees that the State gives no warranty in relation to the data (including accuracy, reliability, completeness, timeliness or suitability) for any use, damage or costs (including consequential damage) relating to any use of the data. Data must not be used for direct marketing or be used in breach of the privacy laws.

Bushfire Hazard (Bushfire Prone Areas) as at September 2014

Geographic Datum of Australia (GDA64)

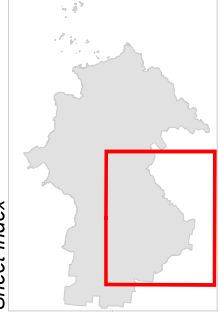
Version: 1.0

Gazetted Date: 01/04/2021

Approx Scale @ A3: 1:650,000



Sheet Index



**Bushfire Hazard - OM 4.4
Rural Areas (south-west)**