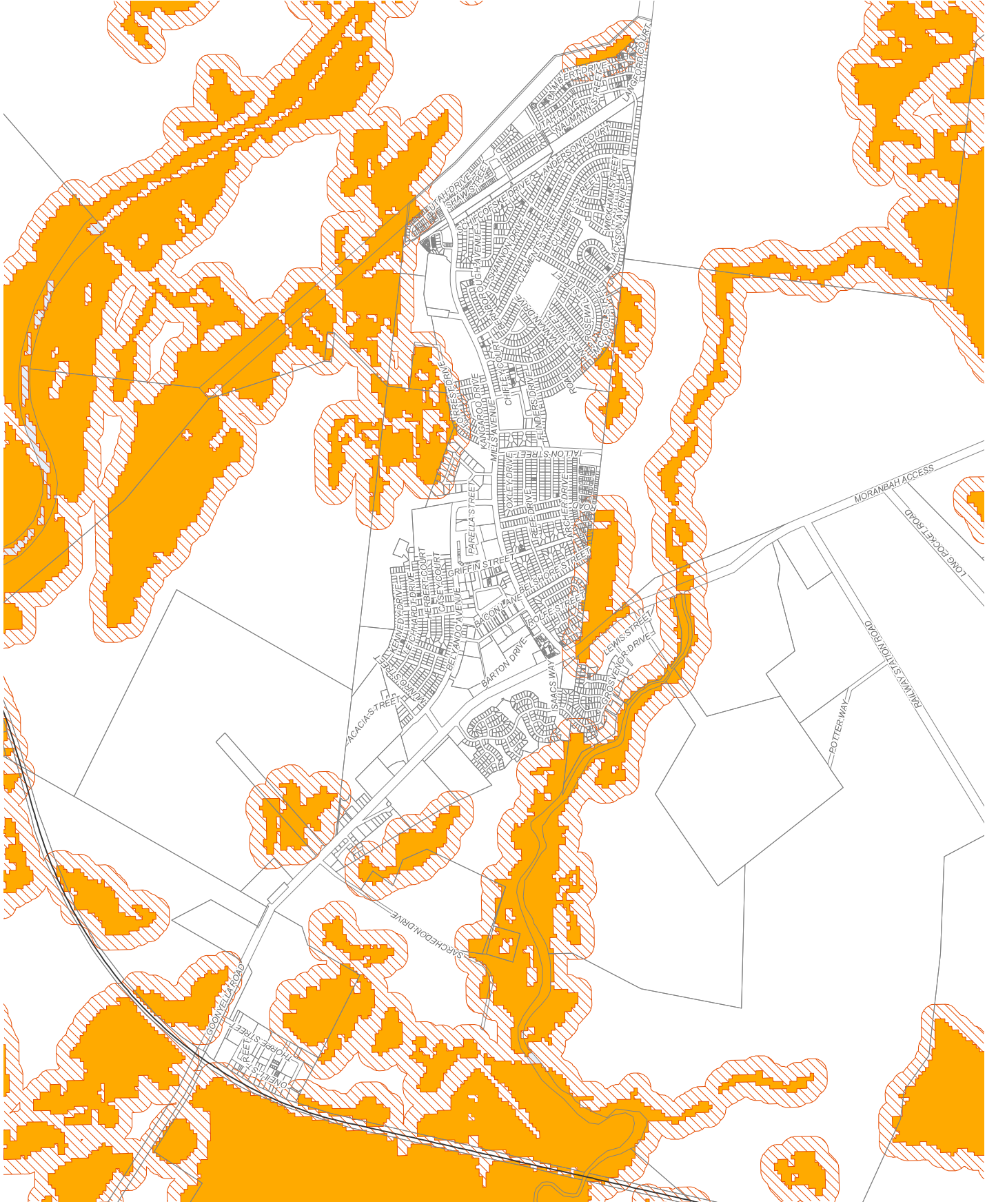


Isaac Regional  
 Planning Scheme 2021  
 Bushfire Hazard Overlay Map  
 Moranbah

- Bushfire Hazard**
- Very High Potential Bushfire Intensity
  - High Potential Bushfire Intensity
  - Medium Potential Bushfire Intensity
  - Potential Impact Buffer
  - Cadastral Boundary
  - Local Government Boundary
  - Waterway
  - Railway Network



Note: Where overlays do not appear on the map, the overlay does not apply within the area.

**DIGITAL CADASTRAL DATA BASE - BOUNDARY & TERRAIN INFORMATION.**  
 Based on or contains data provided by the State of Queensland (Department of Resources and Energy) and the State of Queensland (Department of Transport and Main Roads). The State of Queensland does not warrant the accuracy, reliability, completeness, or suitability for any purpose of the data. The State of Queensland is not liable for any loss, damage or costs (including consequential damage) relating to any use of the data. Data must not be used for direct marketing or be used in connection with the privacy laws.

Bushfire Hazard (Bushfire Prone Areas) as at September 2014  
 Geospatial Datum of Australia (GDA64)  
 Version: 1.0  
 Gazetted Date: 01/04/2021  
 Approx Scale @ A3: 1:27,000



Sheet Index



Bushfire Hazard - OM 4.5  
 Moranbah

Isaac Regional  
 Planning Scheme 2021  
 Bushfire Hazard Overlay Map  
 Clermont

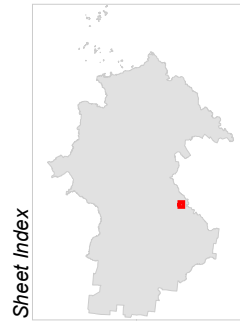
- Bushfire Hazard**
- Very High Potential Bushfire Intensity
  - High Potential Bushfire Intensity
  - Medium Potential Bushfire Intensity
  - Potential Impact Buffer
  - Cadastral Boundary
  - Local Government Boundary
  - Waterway
  - Railway Network



Note: Where overlays do not appear on the map, the overlay does not apply within the area.

**DIGITAL CADASTRAL DATA BASE - BOUNDARY & TERRAIN INFORMATION.**  
 Based on or contains data provided by the State of Queensland (Department of Resources and Energy Safety). The State does not warrant the accuracy, reliability, completeness, or suitability for any purpose of the data. The State gives no warranty in relation to the data (including accuracy, reliability, completeness, or suitability for any purpose) for any use, damage or costs (including consequential damage) relating to any use of the data. Data must not be used for direct marketing or be used in connection with the privacy laws.

Bushfire Hazard (Bushfire Prone Areas) as at September 2014  
 Geometric Datum of Australia (GDA64)  
 Version: 1.0  
 Gazetted Date: 01/04/2021  
 Approx Scale @ A3: 1:25,000



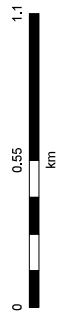
- Bushfire Hazard**
- Very High Potential Bushfire Intensity
  - High Potential Bushfire Intensity
  - Medium Potential Bushfire Intensity
  - Potential Impact Buffer
  - Cadastral Boundary
  - Waterway
  - Railway Network



Note: Where overlays do not appear on the map, the overlay does not apply within the area.

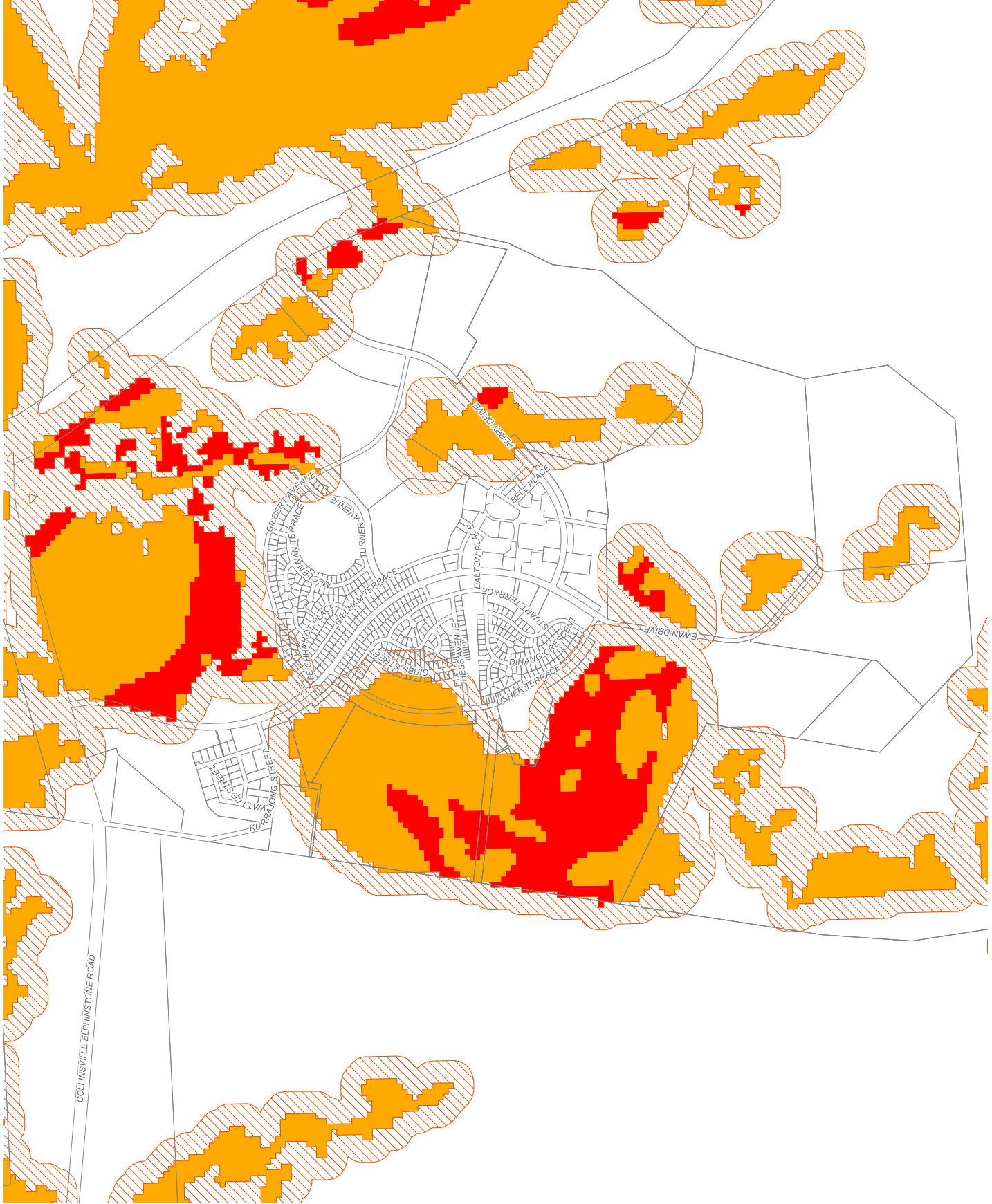
**DIGITAL CADASTRAL DATA BASE - BOUNDARY & TERRAIN INFORMATION.**  
 Based on or contains data provided by the State of Queensland (Department of Resources and Energy) and the State of Queensland (Department of Transport and Main Roads). The State of Queensland (Department of Resources and Energy) and the State of Queensland (Department of Transport and Main Roads) warrant the accuracy, reliability, completeness, timeliness and availability of the data you acknowledge and agree that the State gives no warranty in relation to the data (including accuracy, reliability, completeness, timeliness and availability) for any use, damage or costs (including consequential damage) relating to any use of the data. Data must not be used for direct marketing or be used in breach of the privacy laws.

Bushfire Hazard (Bushfire Prone Areas) as at September 2014  
 Geometric Datum of Australia (GDA64)  
 Version: 1.0  
 Gazetted Date: 01/04/2021  
 Approx Scale @ A3: 1:20,000





- Bushfire Hazard**
- Very High Potential Bushfire Intensity
  - High Potential Bushfire Intensity
  - Medium Potential Bushfire Intensity
  - Potential Impact Buffer
  - Cadastral Boundary
  - Local Government Boundary
  - Waterway
  - Railway Network



Note: Where overlays do not appear on the map, the overlay does not apply within the area.

**DIGITAL CADASTRAL DATA - BOUNDARY & TERRAIN INFORMATION.**  
Based on or contains data provided by the State of Queensland (Department of Natural Resources and Water) and the State of Queensland (Department of Transport and Main Roads). The user acknowledges and agrees that the State gives no warranty in relation to the data (including accuracy, reliability, completeness, timeliness or suitability) for any use, including consequential damage relating to any use of the data. Data must not be used for direct marketing or be used in breach of the privacy laws.

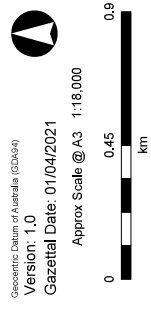
Bushfire Hazard (Bushfire Prone Areas) as at September 2014

Geographic Datum of Australia (GDA94)

Version: 1.0

Gazetted Date: 01/04/2021

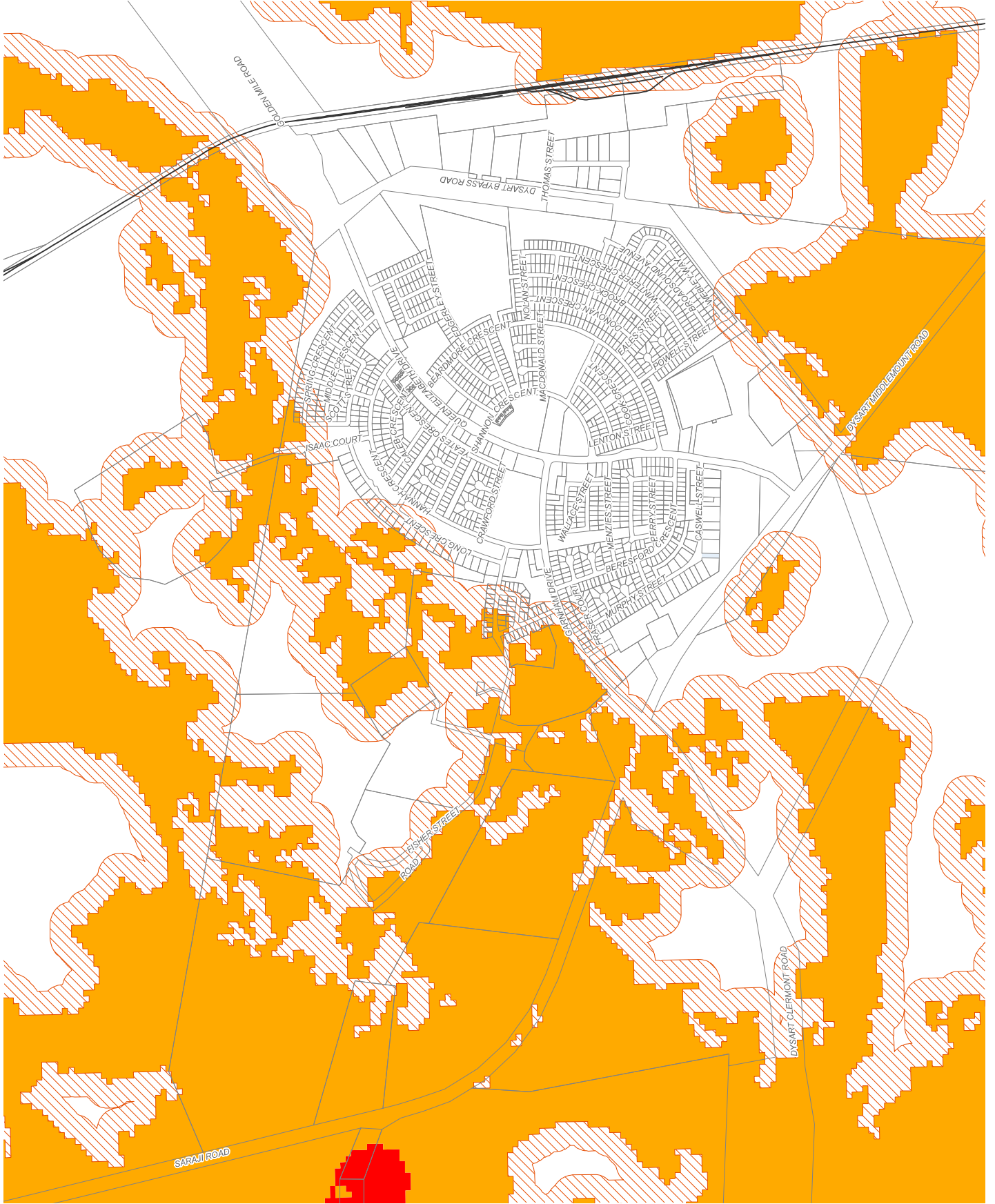
Approx Scale @ A3: 1:18,000



Sheet Index



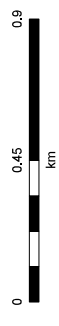
- Bushfire Hazard**
- Very High Potential Bushfire Intensity
  - High Potential Bushfire Intensity
  - Medium Potential Bushfire Intensity
  - Potential Impact Buffer
- Other Features**
- Cadastral Boundary
  - Local Government Boundary
  - Waterway
  - Railway Network



Note: Where overlays do not appear on the map, the overlay does not apply within the area.

**DIGITAL CADASTRAL DATA BASE - BOUNDARY & TERRAIN INFORMATION.**  
 Based on or contains data provided by the State of Queensland (Department of Resources and Energy) and the State of Western Australia (Department of Land Administration). The user acknowledges and agrees that the State gives no warranty in relation to the data (including accuracy, reliability, completeness, timeliness or suitability) for any use, (including or not including consequential damage) relating to any use of the data. Data must not be used for direct marketing or be used in breach of the privacy laws.

Bushfire Hazard (Bushfire Prone Areas) as at September 2014  
 Geometric Datum of Australia (GDA64)  
 Version: 1.0  
 Gazetted Date: 01/04/2021  
 Approx Scale @ A3: 1:17,000

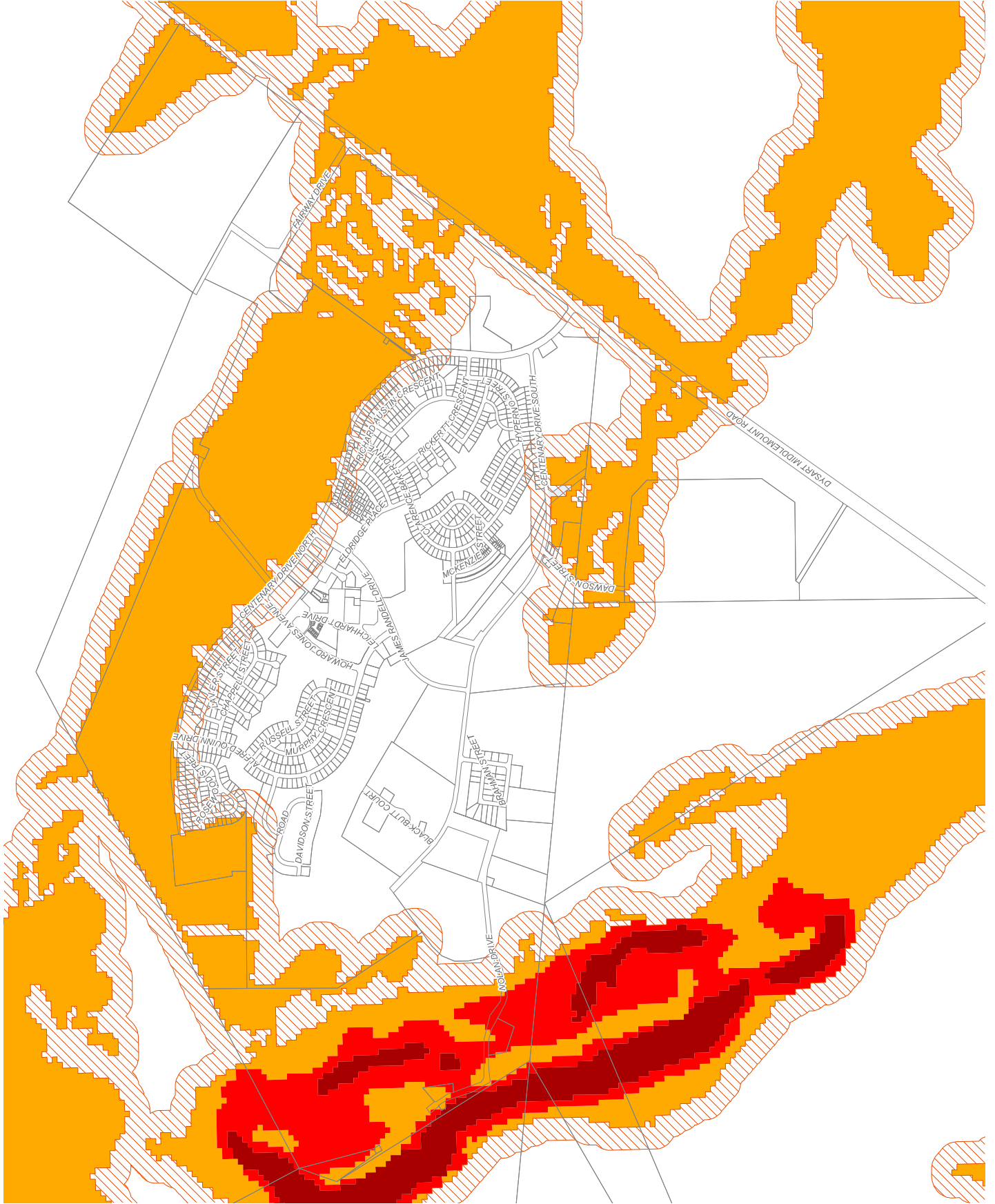


Sheet Index



**Isaac Regional  
Planning Scheme 2021  
Bushfire Hazard Overlay Map  
Middlemount**

- Bushfire Hazard**
- Very High Potential Bushfire Intensity
  - High Potential Bushfire Intensity
  - Medium Potential Bushfire Intensity
  - Potential Impact Buffer
  - Cadastral Boundary
  - Local Government Boundary
  - Waterway
  - Railway Network



Note: Where overlays do not appear on the map, the overlay does not apply within the area.

**DIGITAL CADASTRAL DATA - BOUNDARY & TERRAIN INFORMATION.**  
Based on or contains data provided by the State of Queensland (Department of Resources and Energy) and the State of Queensland (Department of Transport and Main Roads). The State of Queensland does not warrant the accuracy, reliability, completeness, or suitability of this data for any purpose. The State of Queensland is not liable in negligence for any loss, damage or costs (including consequential damage) relating to any use of the data. Data must not be used for direct marketing or be used in connection with the privacy laws.

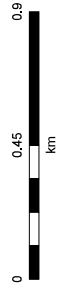
Bushfire Hazard (Bushfire Prone Areas) as at September 2014

Geographic Datum of Australia (GDA64)

Version: 1.0

Gazetted Date: 01/04/2021

Approx Scale @ A3: 1:18,000



Sheet Index



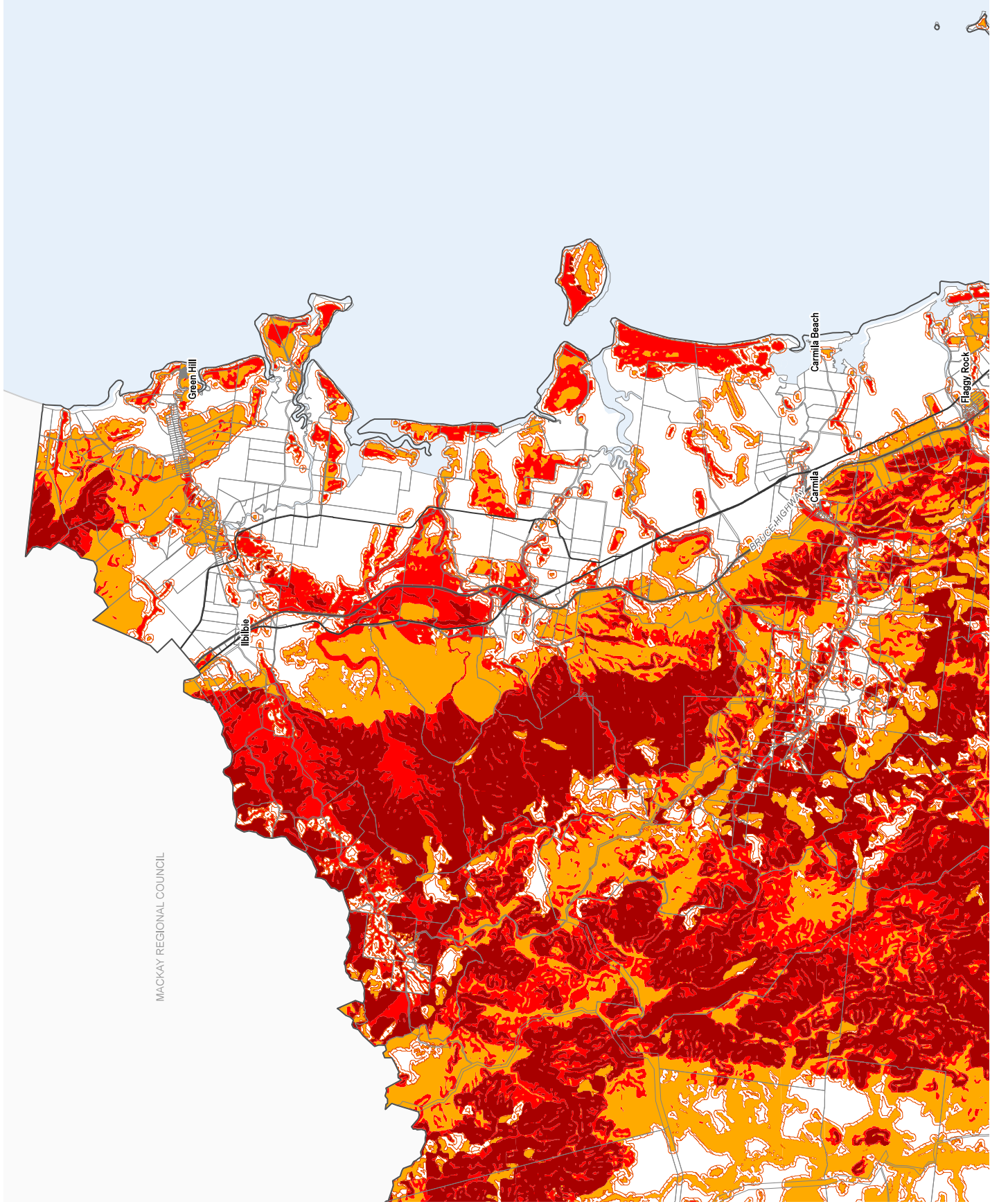
**Bushfire Hazard - OM 4.10  
Middlemount**



**Isaac Regional  
Planning Scheme 2021  
Bushfire Hazard Overlay Map  
Coastal Area (north)**

- Bushfire Hazard**
- Very High Potential Bushfire Intensity
  - High Potential Bushfire Intensity
  - Medium Potential Bushfire Intensity
  - Potential Impact Buffer
  - Cadastral Boundary
  - Local Government Boundary
  - Waterway
  - Major Roads
  - Railway Network

MACKAY REGIONAL COUNCIL



Note: Where overlays do not appear on the map, the overlay does not apply within the area.

**DIGITAL CADASTRAL DATA BASE - BOUNDARY & TERRAIN INFORMATION.**  
Based on or contains data provided by the State of Queensland (Department of Resources and Energy) and the State of Queensland (Department of Transport and Main Roads). The State of Queensland does not warrant, in relation to the data (including accuracy, reliability, completeness, timeliness or suitability) for any use, damage or costs (including consequential damage) relating to any use of the data. Data must not be used for direct marketing or be used in breach of the privacy laws.

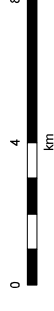
Bushfire Hazard (Bushfire Prone Areas) as at September 2014

Geospatial Datum of Australia (GDA94)

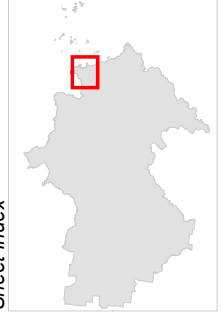
Version: 1.0

Gazetted Date: 01/04/2021

Approx Scale @ A3: 1:150,000



Sheet Index



**Bushfire Hazard - OM 4.11  
Coastal Area (north)**



Isaac Regional  
 Planning Scheme 2021  
 Bushfire Hazard Overlay Map  
 Coastal Area (central)

- Bushfire Hazard**
- Very High Potential Bushfire Intensity
  - High Potential Bushfire Intensity
  - Medium Potential Bushfire Intensity
  - Potential Impact Buffer
  - Cadastral Boundary
  - Local Government Boundary
  - Waterway
  - Major Roads
  - Railway Network

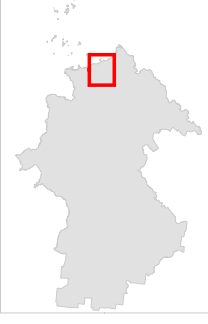
Note: Where overlays do not appear on the map, the overlay does not apply within the area.

**DIGITAL CADASTRAL DATA BASE - BOUNDARY & TERRAIN INFORMATION.**  
 Based on or contains data provided by the State of Queensland (Department of Resources and Energy) and the State of Queensland (Department of Transport and Main Roads). The State does not warrant the accuracy, reliability, completeness, timeliness or suitability for any use, including consequential damage relating to any use of the data. Data must not be used for direct marketing or be used in connection with the primary laws.

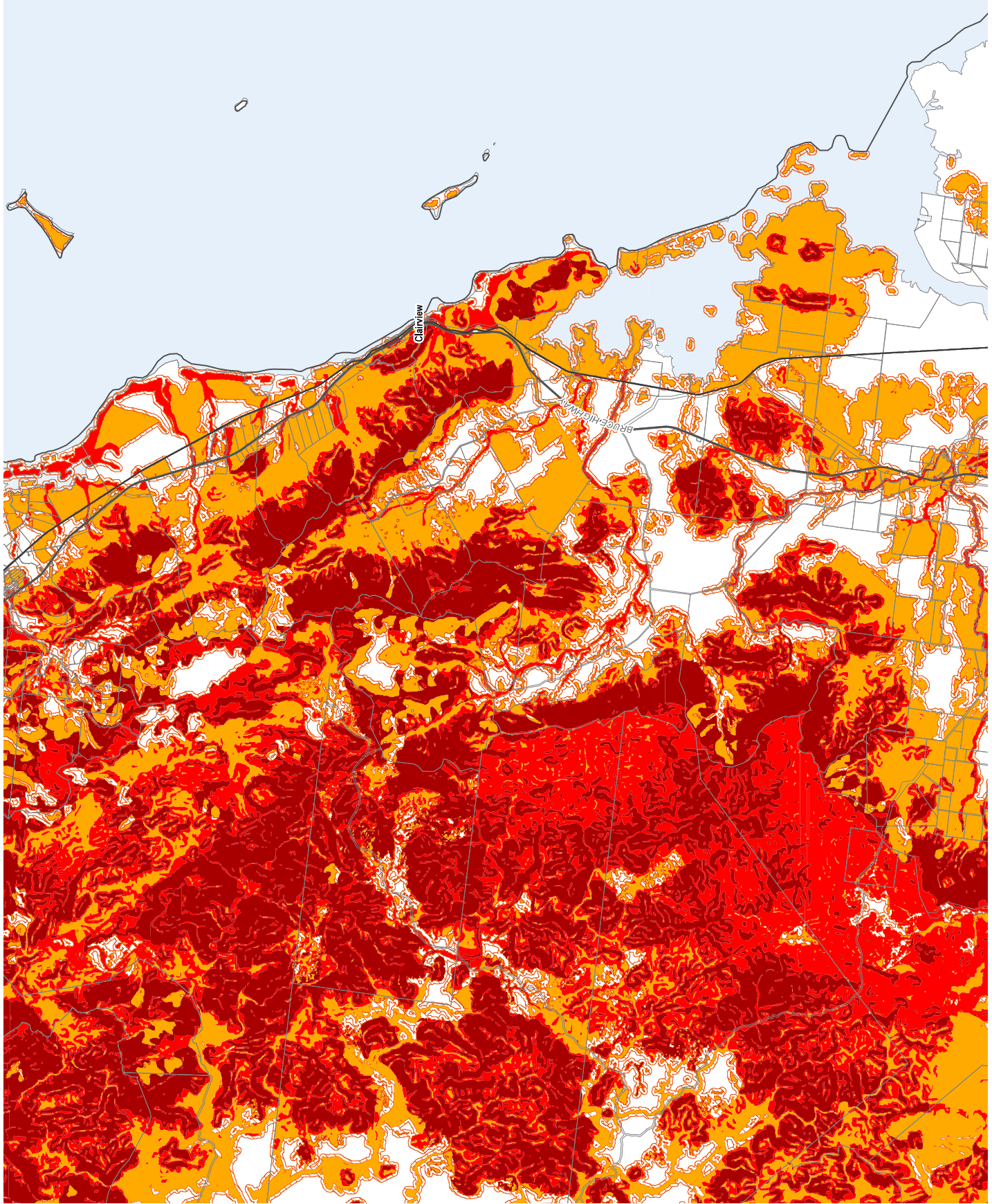
Bushfire Hazard (Bushfire Prone Areas) as at September 2014  
 Geometric Datum of Australia (GDA94)  
 Version: 1.0  
 Gazetted Date: 01/04/2021  
 Approx Scale @ A3: 1:150,000



Sheet Index

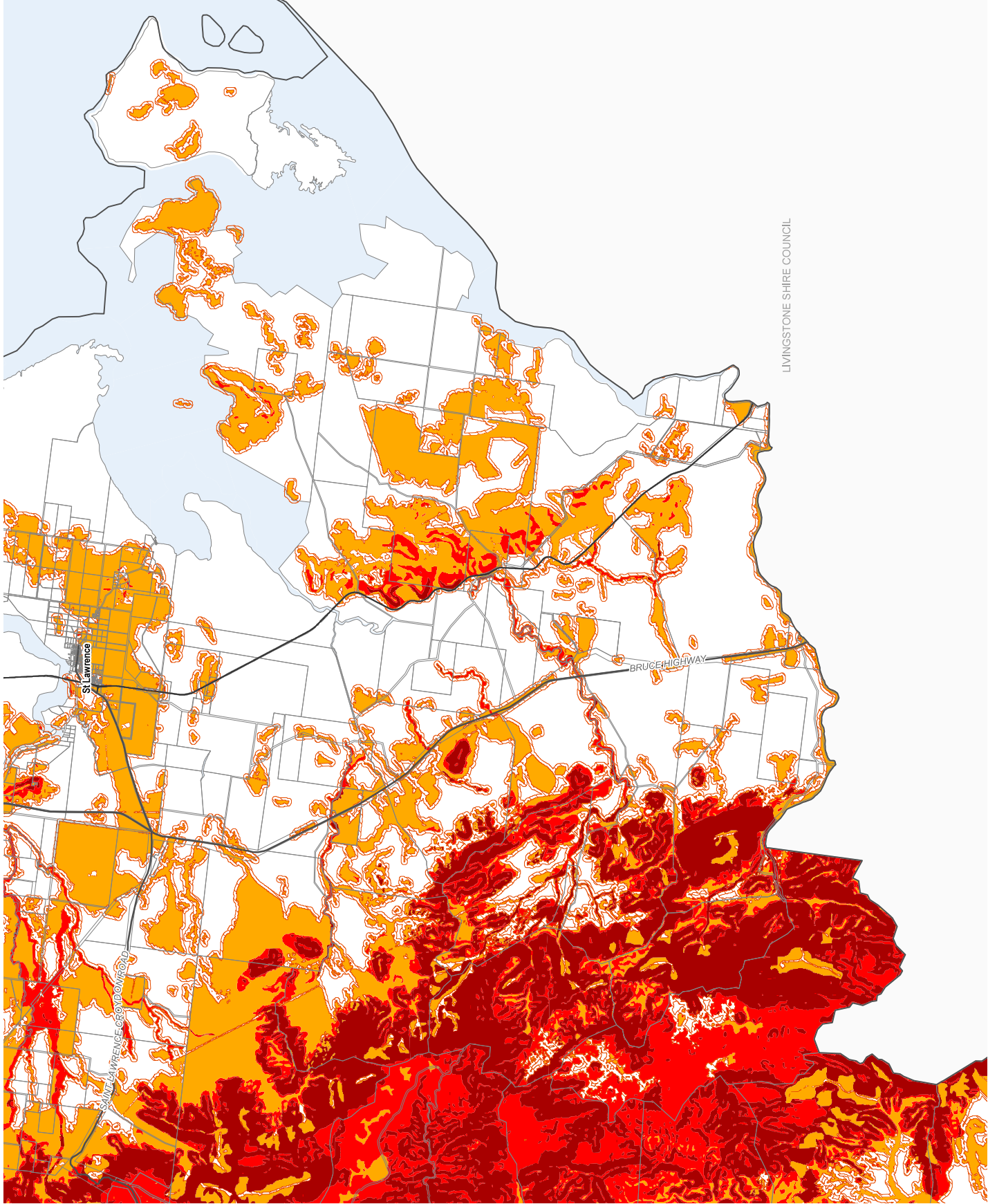


Bushfire Hazard - OM 4.12  
 Coastal Area (central)



**Isaac Regional  
Planning Scheme 2021  
Bushfire Hazard Overlay Map  
Coastal Area (south)**

- Bushfire Hazard**
- Very High Potential Bushfire Intensity
  - High Potential Bushfire Intensity
  - Medium Potential Bushfire Intensity
  - Potential Impact Buffer
  - Cadastral Boundary
  - Local Government Boundary
  - Waterway
  - Major Roads
  - Railway Network



LIVINGSTONE SHIRE COUNCIL

Note: Where overlays do not appear on the map, the overlay does not apply within the area.

**DIGITAL CADASTRAL DATA BASE - BOUNDARY & TERRAIN INFORMATION.**  
Based on or contains data provided by the State of Queensland (Department of Resources and Energy) and the State of Queensland (Department of Transport and Infrastructure) and is provided for your information only. The State gives no warranty in relation to the data (including accuracy, reliability, completeness, timeliness or suitability) for any use, damage or costs (including consequential damage) relating to any use of the data. Data must not be used for direct marketing or be used in breach of the privacy laws.

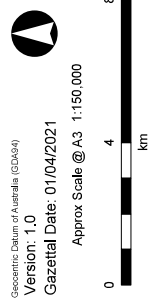
Bushfire Hazard (Bushfire Prone Areas) as at September 2014

Geospatial Datum of Australia (GDA94)

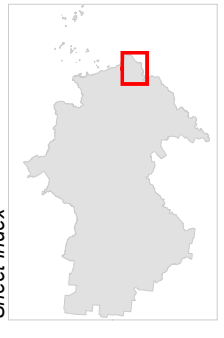
**Version: 1.0**

**Gazetted Date: 01/04/2021**

**Approx Scale @ A3: 1:150,000**



**Sheet Index**



**Bushfire Hazard - OM 4.13  
Coastal Area (south)**

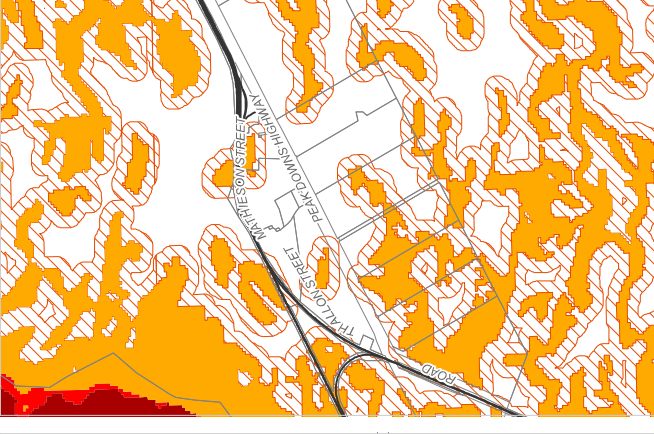




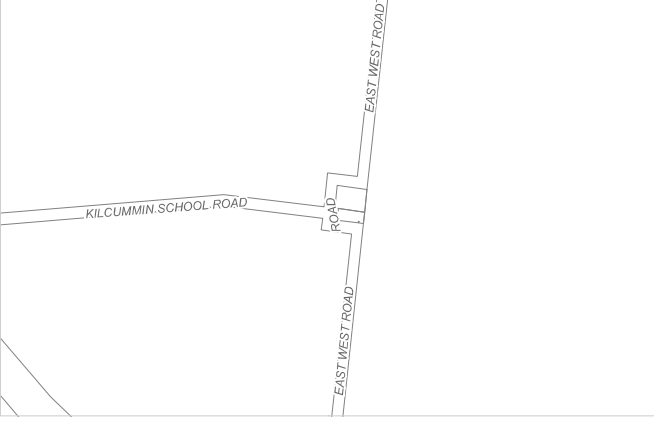




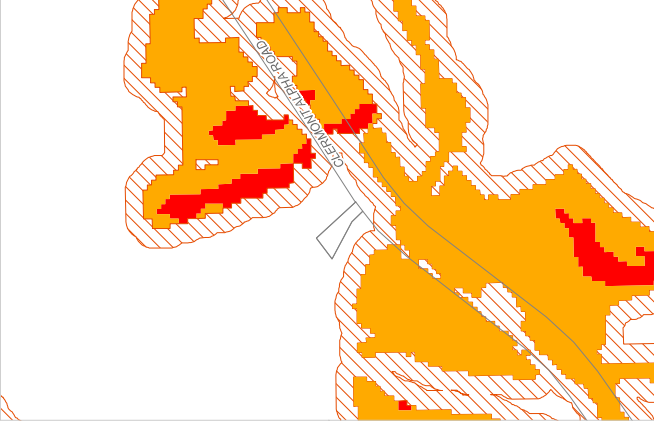
**Coppabella**



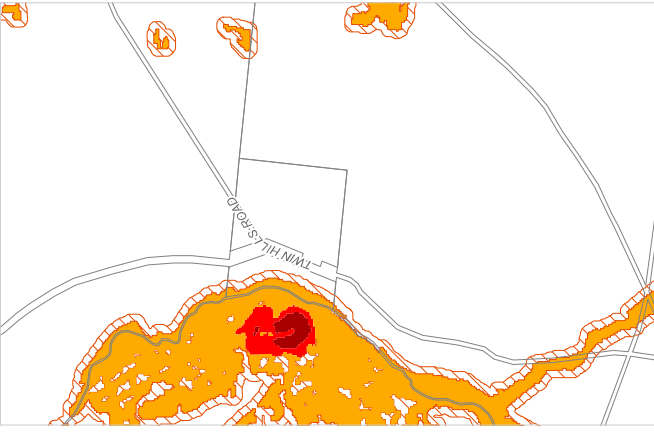
**Kilcummin**



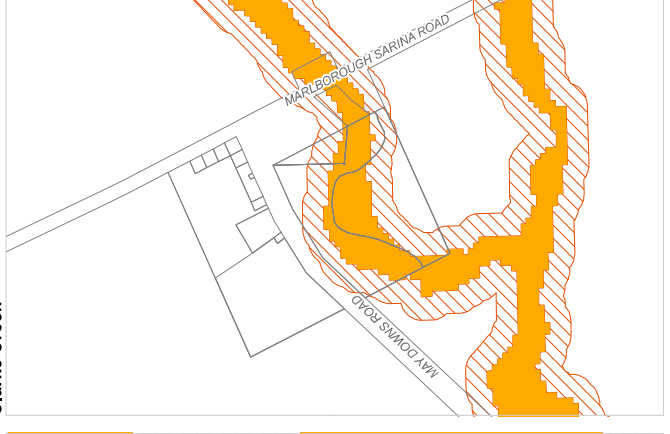
**Mistake Creek**



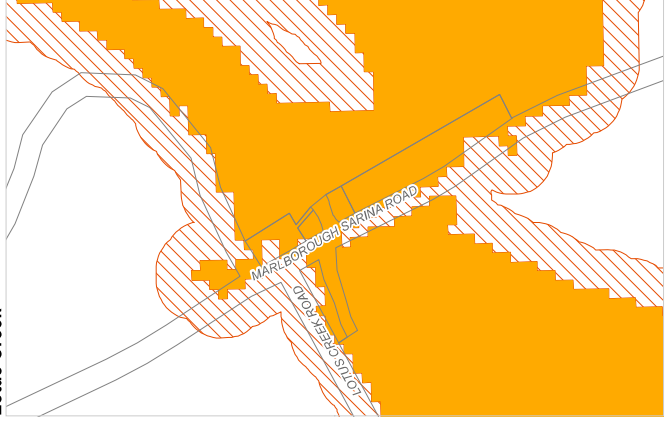
**Twin Hills**



**Clarke Creek**



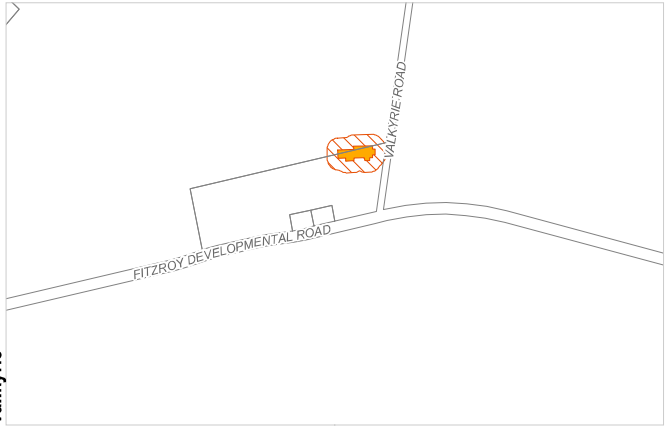
**Lotus Creek**



**Mackenzie River**



**Valkyrie**



Note: Where overlays do not appear on the map, the overlay does not apply within the area.

**DIGITAL CADASTRAL DATABASE - CURRENTLY A TERRAIN INFORMATION**  
Based on or contains data provided by the State of Queensland (Department of Natural Resources and Mines) (2017 to 2019). In consideration of the State of Queensland's liability for the data (including accuracy, reliability, completeness, currency or suitability) and accepts no liability (including without limitation, damages) relating to any use of the data. Data must not be used for direct marketing or be used in breach of the privacy laws.

Bushfire Hazard (Bushfire Prone Areas) as at September 2014, sourced from Geospatial  
Geospatial Datum of Australia (GDA64)



Version: 1.0  
Gazetted Date: 01/04/2021

Various scales

**Sheet Index**

