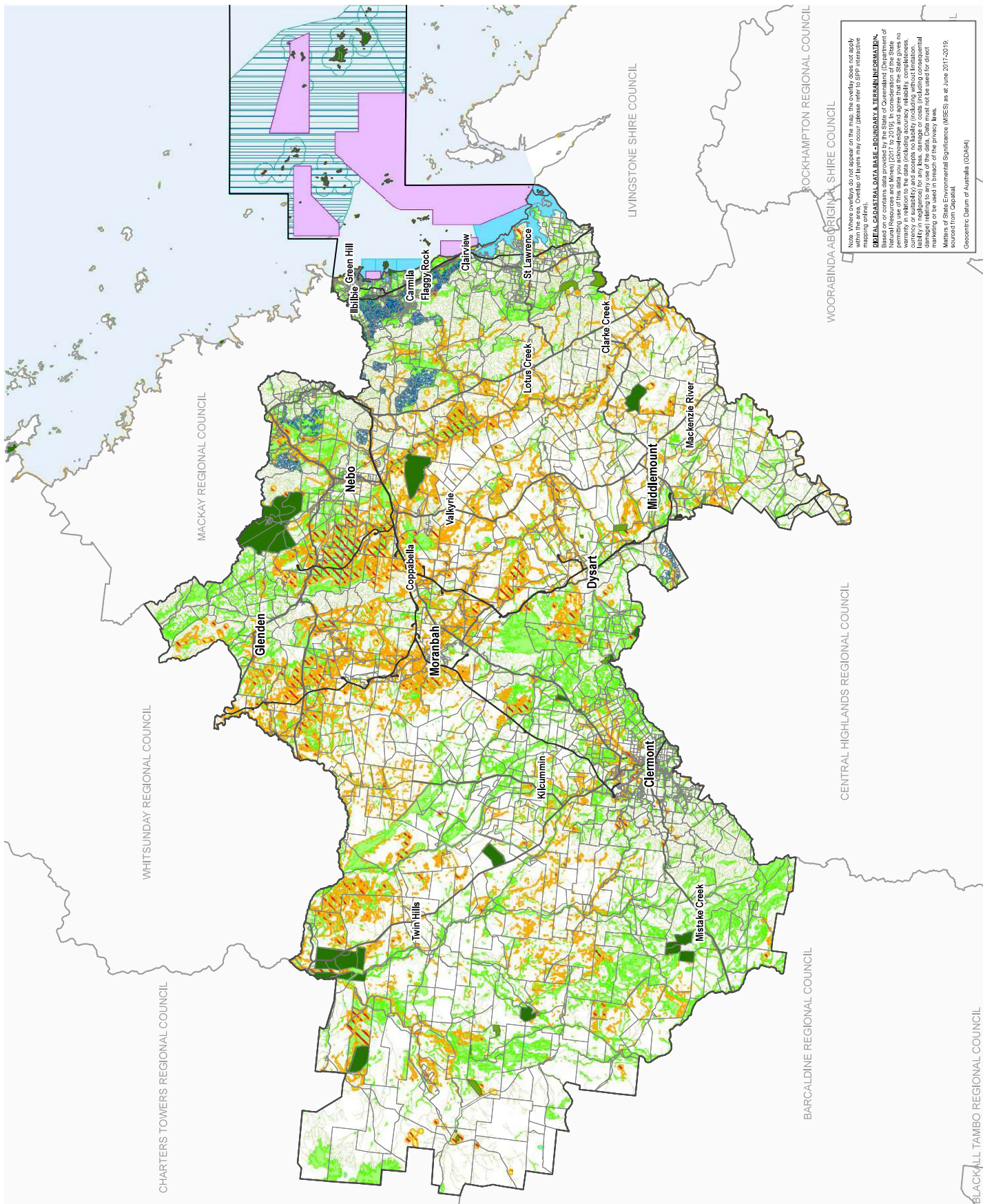


- Cadastral Boundary
- Waterway
- Railway Network
- Major Roads
- MSES - Wildlife habitat (koala habitat areas - core)
- MSES - Declared fish habitat area
- MSES - High ecological value waters (wetland)
- MSES - High ecological significance wetlands
- MSES - Marine park (highly protected areas)
- MSES - Protected areas (estates)
- MSES - Protected areas (nature refuge)
- MSES - Regulated vegetation (intersecting a watercourse)
- MSES - High ecological value waters (watercourse)
- MSES - Regulated vegetation (essential habitat)
- MSES - Regulated vegetation (wetland)
- MSES - Regulated vegetation (category B)
- MSES - Regulated vegetation (category C)
- Local Government Boundary
- MSES - Regulated vegetation (category C)
- MSES - Regulated vegetation (full extent)
- MSES - Regulated vegetation (category R) locally refined
- MSES - Strategic environmental area (designated precinct)
- MSES - Wildlife habitat (special least concern animal)
- MSES - Wildlife habitat (endangered or vulnerable wildlife)
- MSES - Legally secured offset area (offset register)
- MSES - Legally secured offset area (regulated vegetation offsets)

Version: 1.0
Gazettal Date: 01/04/2021

Approx Scale @ A3
1:1,520,000

Sheet Index



Note: Where overlays do not appear on the map, the overlay does not apply (blank areas may occur (please refer to GPW intensive mapping online)).

Overlap of layers may occur (please refer to GPW intensive mapping online).

DIGITAL CADASTRAL DATA BASE - BOUNDARY & INTERIM INFORMATION.

Based on or contains data provided by the State of Queensland (Department of Natural Resources and Environmental Regulation). The State does not warrant the accuracy, reliability, completeness, or suitability of this data for any purpose. The State gives no warranty in relation to the data (including accuracy, reliability, completeness, or suitability) for any use of the data, and does not accept any liability (including consequential damage) relating to any use of the data. Data must not be used for direct marketing or be used in breach of the privacy laws.

Environmental Significance (MSES) as at June 2017-2019, sourced from Capral.

Geospatial Data of Australia (GDAA)

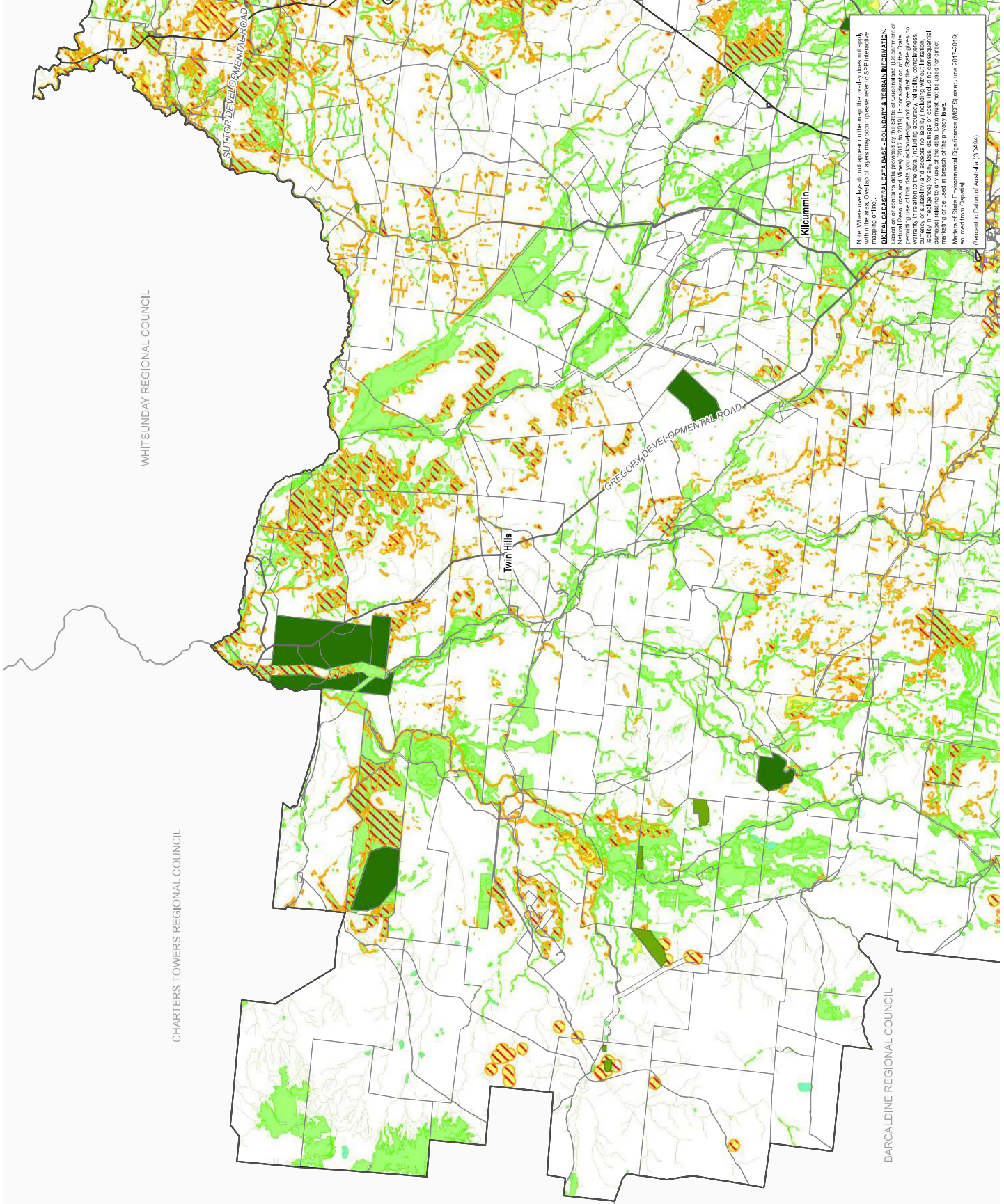
**Isaac Regional
Planning Scheme 2021
Environmental Significance
Overlay Map
Rural Areas (north-west)**

- Cadastral Boundary
- Waterway
- Railway Network
- Major Roads
- MSES - Wildlife habitat (koala habitat areas - core)
- MSES - Declared fish habitat area
- MSES - High ecological value waters (wetland)
- MSES - High ecological significance wetlands
- MSES - Marine park (highly protected areas)
- MSES - Protected areas (estates)
- MSES - Protected areas (nature refuge)
- MSES - Regulated vegetation (intersecting a watercourse)
- MSES - High ecological value waters (watercourse)
- MSES - Regulated vegetation (essential habitat)
- MSES - Regulated vegetation (wetland)
- MSES - Regulated vegetation (category B)
- Local Government Boundary
- MSES - Regulated vegetation (category C)
- Local Government Boundary (full extent)
- MSES - Regulated vegetation (category R)
- MSES - Wildlife habitat (koala habitat areas - locally refined)
- MSES - Strategic environmental area (designated precinct)
- MSES - Wildlife habitat (special least concern animal)
- MSES - Wildlife habitat (endangered or vulnerable wildlife)
- MSES - Legally secured offset area (offset register)
- MSES - Legally secured offset area (regulated vegetation offsets)

Version: 1.0
Gazetted Date: 01/04/2021

Approx Scale @ A3
1:650,000

Sheet Index



Note: Where overlays do not appear on the map, the overlay does not apply to the parcel. Overlay of layers may occur (please refer to SPR interactive mapping online).

DIGITAL CADASTRAL DATA BASE - BOUNDARY & TERRAIN INFORMATION
This map or contains data provided by the State of Queensland (Department of Natural Resources and Environmental Sciences) and the State of Queensland (Department of Transport and Main Roads) and is provided to you for your information only. The State does not warrant in relation to the data (including accuracy, reliability, completeness, timeliness or suitability) for any use, including for any purpose (including consequential damage) relating to any use of the data. Data must not be used for direct marketing or be used in breach of the privacy laws.

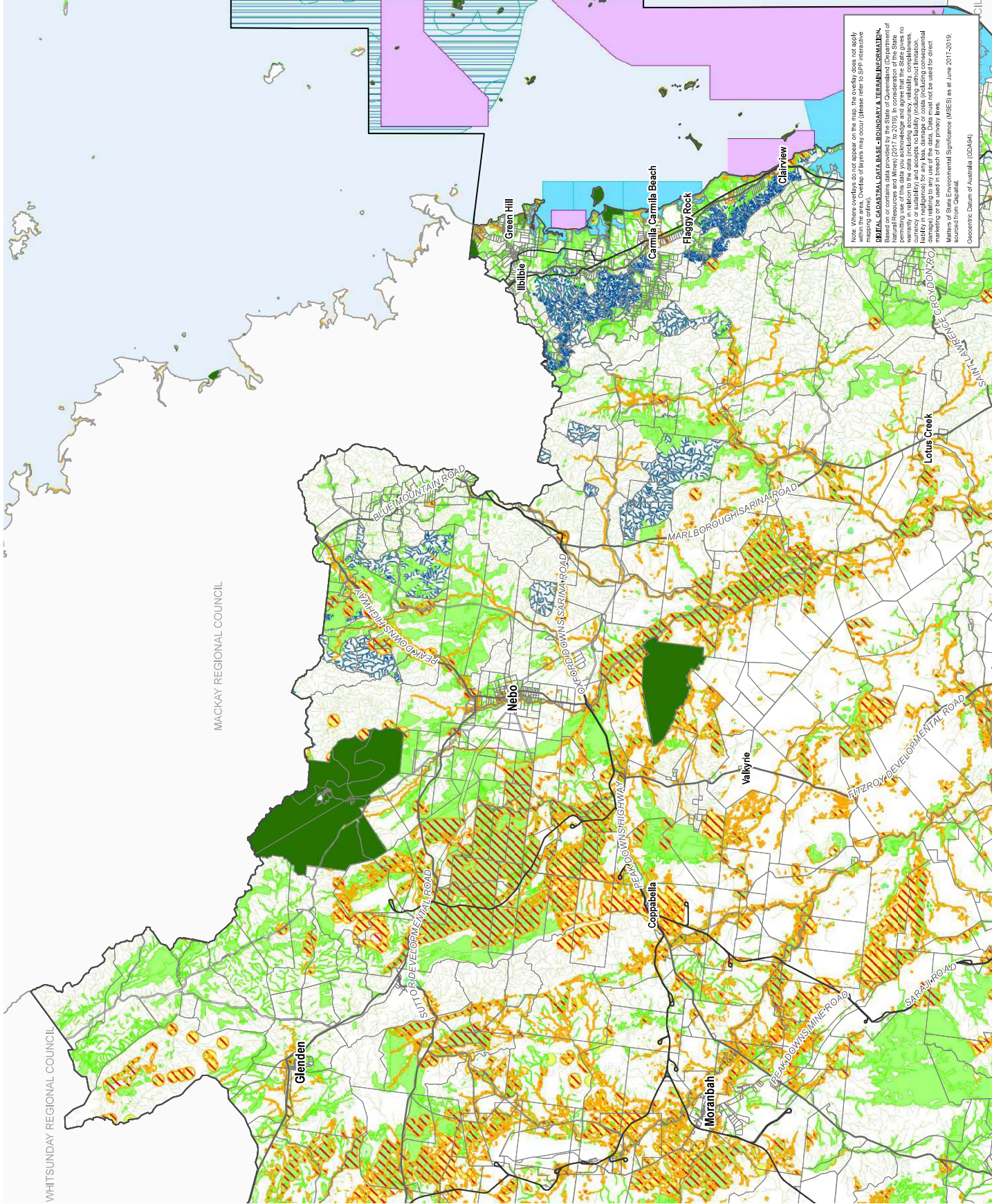
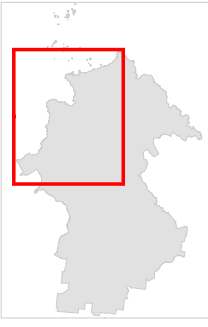
Environmental Significance (MSES) as at June 2017-2019.
Geospatial Data of Australia (GD0494)

Isaac Regional
 Planning Scheme 2021
 Environmental Significance
 Overlay Map
 Rural Areas (north-east)

- Cadastral Boundary
- Waterway
- Railway Network
- Major Roads
- MSES - Wildlife habitat (koala habitat areas - core)
- MSES - Declared fish habitat area
- MSES - High ecological value waters (wetland)
- MSES - High ecological significance wetlands
- MSES - Marine park (highly protected areas)
- MSES - Protected areas (estates)
- MSES - Protected areas (nature refuge)
- MSES - Regulated vegetation (intersecting a watercourse)
- MSES - High ecological value waters (watercourse)
- MSES - Regulated vegetation (essential habitat)
- MSES - Regulated vegetation (wetland)
- MSES - Regulated vegetation (category B)
- MSES - Regulated vegetation (category C)
- Local Government Boundary
- MSES - Regulated vegetation (category C)
- Local Government Boundary (full extent)
- MSES - Regulated vegetation (category R)
- MSES - Wildlife habitat (koala habitat areas - locally refined)
- MSES - Strategic environmental area (designated precinct)
- MSES - Wildlife habitat (special least concern animal)
- MSES - Wildlife habitat (endangered or vulnerable wildlife)
- MSES - Legally secured offset area (offset register)
- MSES - Legally secured offset area (regulated vegetation offsets)

Version: 1.0
 Gazetted Date: 01/04/2021
 Approx Scale @ A3
 1:650,000
 0 10 20 km

Sheet Index



Note: Where overlays do not appear on the map, the overlay does not apply to that area. Overlays of layers may occur (please refer to GPP interactive mapping online).

LEGAL CAUTION: DATA BASE - BOUNDARY & TERMINAL INFORMATION.
 Based on or contains data provided by the State of Queensland (Department of Natural Resources and Environmental Protection) and the State of Queensland (Department of Transport and Main Roads). The State gives no warranty in relation to the data (including accuracy, reliability, completeness, timeliness or suitability) for any use of the data, and does not accept any liability for any loss, damage or costs (including consequential damage) relating to any use of the data. Data must not be used for direct marketing or be used in breach of the privacy laws.

Environmental Significance (MSES) as at June 2017-2019, sourced from Capita.

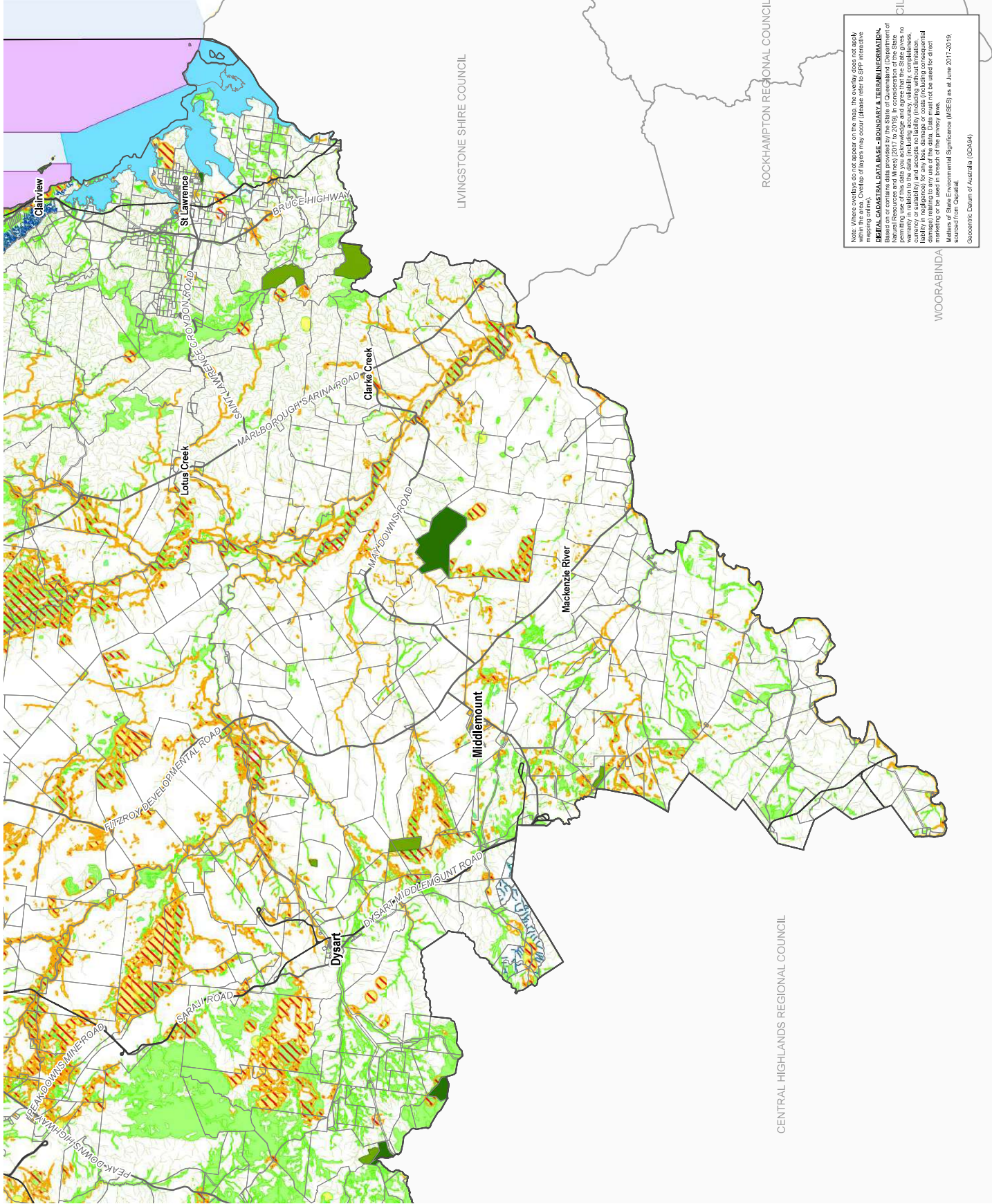
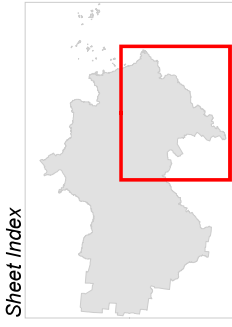
Geographic Datum of Australia (GDA94)

**Isaac Regional
Planning Scheme 2021
Environmental Significance
Overlay Map
Rural Areas (south-east)**

- Cadastral Boundary
- Waterway
- Railway Network
- Major Roads
- MSES - Wildlife habitat (koala habitat areas - core)
- MSES - Declared fish habitat area
- MSES - High ecological value waters (wetland)
- MSES - High ecological significance wetlands
- MSES - Marine park (highly protected areas)
- MSES - Protected areas (estates)
- MSES - Protected areas (nature refuge)
- MSES - Regulated vegetation (intersecting a watercourse)
- MSES - High ecological value waters (watercourse)
- MSES - Regulated vegetation (essential habitat)
- MSES - Regulated vegetation (wetland)
- MSES - Regulated vegetation (category B)
- Local Government Boundary
- MSES - Regulated vegetation (category C)
- Local Government Boundary (full extent)
- MSES - Regulated vegetation (category R)
- MSES - Wildlife habitat (koala habitat areas - locally refined)
- MSES - Strategic environmental area (designated precinct)
- MSES - Wildlife habitat (special least concern animal)
- MSES - Wildlife habitat (endangered or vulnerable wildlife)
- MSES - Legally secured offset area (offset register)
- MSES - Legally secured offset area (regulated vegetation offsets)

Version: 1.0
Gazetted Date: 01/04/2021

Approx Scale @ A3
1:650,000



Note: Where overlays do not appear on the map, the overlay does not apply to the area. Overlays of layers may occur (please refer to GPP intensive mapping online).

DIGITAL CADASTRAL DATA BASE - BOUNDARY & INTERIM INFORMATION: Based on or contains data provided by the State of Queensland (Department of Natural Resources and Water) and the State of Queensland (Department of Transport and Main Roads). The user acknowledges and agrees that the State gives no warranty in relation to the data (including accuracy, reliability, completeness, timeliness or suitability) for any use of the data, and that the user will be liable for any loss or damage (including consequential damage) relating to any use of the data. Data must not be used for direct marketing or be used in breach of the privacy laws.

Source: Queensland Environmental Significance (MSES) as at June 2017-2019. Source: Queensland Government (GDA44).

WOORABINDA

CENTRAL HIGHLANDS REGIONAL COUNCIL

ROCKHAMPTON REGIONAL COUNCIL

LIVINGSTONE SHIRE COUNCIL

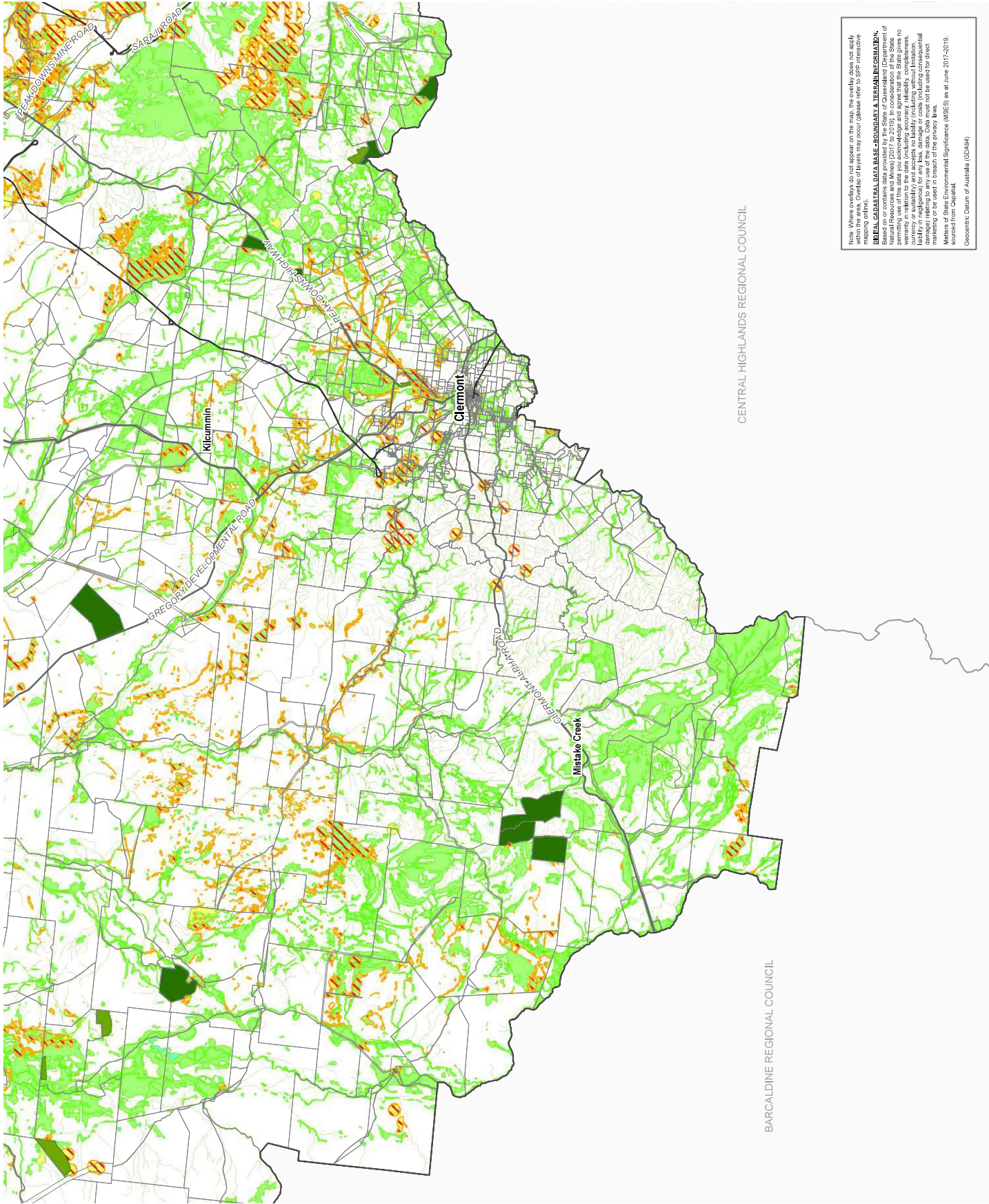
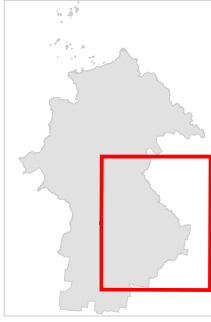
**Isaac Regional
Planning Scheme 2021
Environmental Significance
Overlay Map
Rural Areas (south-west)**

- Cadastral Boundary
- Waterway
- Railway Network
- Major Roads
- MSES - Wildlife habitat (koala habitat areas - core)
- MSES - Declared fish habitat area
- MSES - High ecological value waters (wetland)
- MSES - High ecological significance wetlands
- MSES - Marine park (highly protected areas)
- MSES - Protected areas (estates)
- MSES - Protected areas (nature refuge)
- MSES - Regulated vegetation (intersecting a watercourse)
- MSES - High ecological value waters (watercourse)
- MSES - Regulated vegetation (essential habitat)
- MSES - Regulated vegetation (wetland)
- MSES - Regulated vegetation (category B)
- Local Government Boundary
- MSES - Regulated vegetation (category C)
- Local Government Boundary (full extent)
- MSES - Regulated vegetation (category R)
- MSES - Wildlife habitat (koala habitat areas - locally refined)
- MSES - Strategic environmental area (designated precinct)
- MSES - Wildlife habitat (special least concern animal)
- MSES - Wildlife habitat (endangered or vulnerable wildlife)
- MSES - Legally secured offset area (offset register)
- MSES - Legally secured offset area (regulated vegetation offsets)

Version: 1.0
Gazetted Date: 01/04/2021

Approx Scale @ A3
1:650,000

Sheet Index



CENTRAL HIGHLANDS REGIONAL COUNCIL

BARCOLDINE REGIONAL COUNCIL

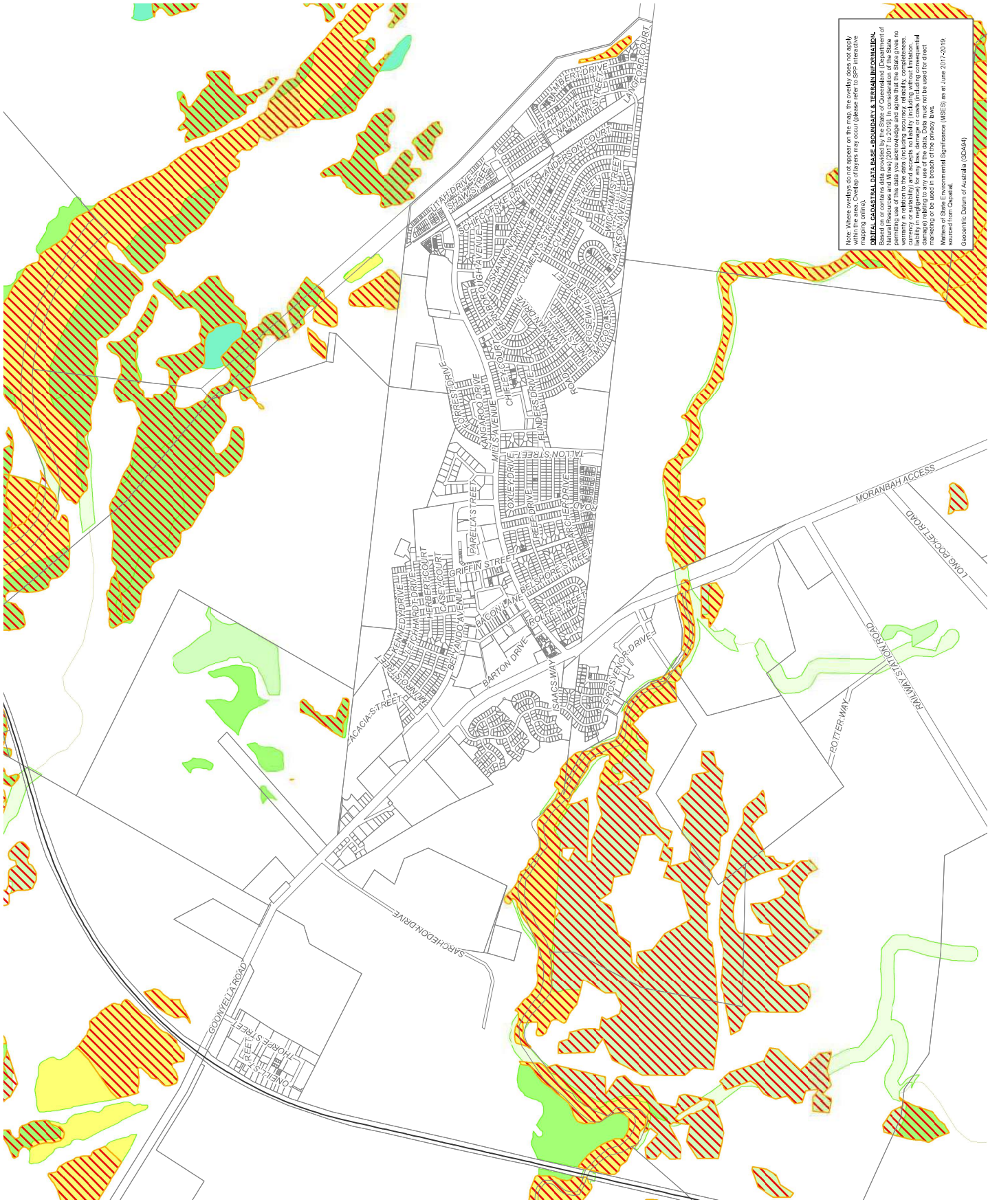
Note: Where overlays do not appear on the map, the overlay does not apply to that area. Overlays of layers may occur (please refer to GPP intensive mapping online).

DIGITAL CADASTRAL DATA BASE - BOUNDARY & INTERIM INFORMATION.
Based on or contains data provided by the State of Queensland (Department of Natural Resources and Environment) and other agencies. The State gives no warranty, in relation to the data (including accuracy, reliability, completeness, suitability or fitness for any purpose) or any liability (including consequential damage) relating to any use of the data. Data must not be used for direct marketing or be used in breach of the privacy laws.

Environmental Significance (MSES) as at June 2017-2019.
Geospatial Data of Australia (GDA04).

**Isaac Regional
Planning Scheme 2021
Environmental Significance
Overlay Map
Moranbah**

- Cadastral Boundary
- Waterway
- Railway Network
- MSES - Wildlife habitat (koala habitat areas - core)
- MSES - Declared fish habitat area (wetland)
- MSES - High ecological value waters
- MSES - High ecological significance wetlands
- MSES - Marine park (highly protected areas)
- MSES - Protected areas (estates)
- MSES - Protected areas (nature refuge)
- MSES - Regulated vegetation (intersecting a watercourse)
- MSES - High ecological value waters (watercourse)
- MSES - Regulated vegetation (essential habitat)
- MSES - Regulated vegetation (wetland)
- MSES - Regulated vegetation (category B)
- Local Government Boundary
- MSES - Regulated vegetation (category C)
- Local Government Boundary (full extent)
- MSES - Regulated vegetation (category R)
- MSES - Wildlife habitat (koala habitat areas - locally retained)
- MSES - Strategic environmental area (designated precinct)
- MSES - Wildlife habitat (special least concern animal)
- MSES - Wildlife habitat (endangered or vulnerable wildlife)
- MSES - Legally secured offset area (offset register)
- MSES - Legally secured offset area (regulated vegetation offsets)

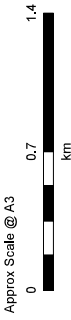


Note: Where overlays do not appear on the map, the overlay does not apply. Overlays of private land may occur (please refer to GPP intensive mapping online).

LEGAL CADASTRAL DATA BASE - BOUNDARY & INTERIM INFORMATION.
Based on or contains data provided by the State of Queensland (Department of Resources and Energy) and the State of Queensland (Department of Environment and Heritage) and does not constitute a warranty in relation to the data (including accuracy, reliability, completeness, timeliness or suitability) for any use, damage or costs (including consequential damage) relating to any use of the data. Data must not be used for direct marketing or be used in breach of the privacy laws.

Environmental Significance (MSES) as at June 2017-2019.
Geospatial Catalogue of Australia (GDA44).

Version: 1.0
Gazetted Date: 01/04/2021



Sheet Index



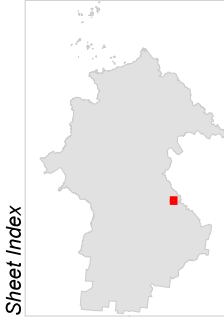
**Isaac Regional
Planning Scheme 2021
Environmental Significance
Overlay Map
Clermont**

- Cadastral Boundary
- Waterway
- Railway Network
- MSES - Wildlife habitat (koala habitat areas - core)
- MSES - Declared fish habitat area (wetland)
- MSES - High ecological value waters
- MSES - High ecological significance wetlands
- MSES - Marine park (highly protected areas)
- MSES - Protected areas (estates)
- MSES - Protected areas (nature refuge)
- MSES - Regulated vegetation (intersecting a watercourse)
- MSES - High ecological value waters (watercourse)
- MSES - Regulated vegetation (essential habitat)
- MSES - Regulated vegetation (wetland)
- MSES - Regulated vegetation (category B)
- Local Government Boundary
- MSES - Regulated vegetation (category C)
- Local Government Boundary (full extent)
- MSES - Regulated vegetation (category R)
- MSES - Wildlife habitat (koala habitat areas - locally refined)
- MSES - Strategic environmental area (designated precinct)
- MSES - Wildlife habitat (special least concern animal)
- MSES - Wildlife habitat (endangered or vulnerable wildlife)
- MSES - Legally secured offset area (offset register)
- MSES - Legally secured offset area (regulated vegetation offsets)

Version: 1.0
Gazetted Date: 01/04/2021

Approx Scale @ A3
0 0.65 1.3 km

1:25 000



Note: Where overlays do not appear on the map, the overlay does not apply. Overlays of layers may occur (please refer to GPP interactive mapping online).

DIGITAL CADASTRAL DATA BASE - BOUNDARY & TERMS INFORMATION.
Based on or contains data provided by the State of Queensland (Department of Resources and Energy Safety). The State of Queensland does not warrant, in relation to the data (including accuracy, reliability, completeness, suitability or applicability) for any use, damage or costs (including consequential damage) relating to any use of the data. Data must not be used for direct marketing or be used in breach of the privacy laws.

Environmental Significance (MSES) as at June 2017-2019, sourced from CapSplat.

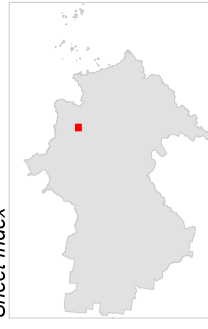
Geospatial Data of Australia (GDA94)

- Cadastral Boundary
- Waterway
- Railway Network
- MSES - Wildlife habitat (koala habitat areas - core)
- MSES - Declared fish habitat area (wetland)
- MSES - High ecological value waters
- MSES - High ecological significance wetlands
- MSES - Marine park (highly protected areas)
- MSES - Protected areas (estates)
- MSES - Protected areas (nature refuge)
- MSES - Regulated vegetation (intersecting a watercourse)
- MSES - High ecological value waters (watercourse)
- MSES - Regulated vegetation (essential habitat)
- MSES - Regulated vegetation (wetland)
- MSES - Regulated vegetation (category B)
- Local Government Boundary
- MSES - Regulated vegetation (category C)
- Local Government Boundary (full extent)
- MSES - Regulated vegetation (category R)
- MSES - Wildlife habitat (koala habitat areas - locally retained)
- MSES - Strategic environmental area (designated precinct)
- MSES - Wildlife habitat (special least concern animal)
- MSES - Wildlife habitat (endangered or vulnerable wildlife)
- MSES - Legally secured offset area (offset register)
- MSES - Legally secured offset area (regulated vegetation offsets)

Version: 1.0
Gazetted Date: 01/04/2021

Approx Scale @ A3
0 0.5 1 km

Sheet Index



Note: Where overlays do not appear on the map, the overlay does not apply. Overlays of private land may occur (please refer to GPP intensive mapping online).

DIGITAL CADASTRAL DATA BASE - BOUNDARY & INTERIM INFORMATION.
Based on or contains data provided by the State of Queensland (Department of Natural Resources and Environmental Regulation). The State does not warrant the accuracy, reliability, completeness, or suitability of the data for any purpose. The State does not accept any liability in negligence for any loss, damage or costs (including consequential damage) relating to any use of the data. Data must not be used for direct marketing or be used in breach of the privacy laws.

Geographic Data of Australia (GDA94)