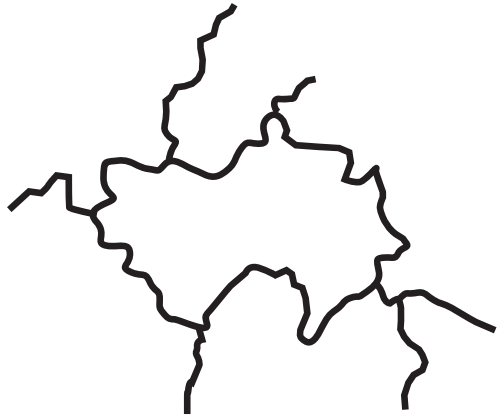


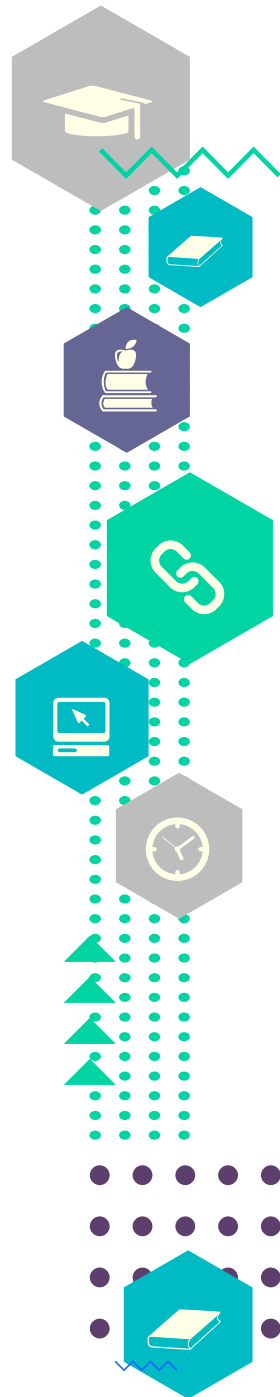


# acknowledgement to country



Isaac Regional Council acknowledges the Koinjmal, Widi, Birriah, Barada Kabalbara Yetimarala, Jangga, Barada Barna, Western Kangoulu and Wirdi Peoples as the Traditional Custodians of the lands and waters throughout the Isaac region and their enduring cultural connection to country and community.

We pay our respect to the Elders past, present and emerging for they hold the stories, culture and traditions of Aboriginal and Torres Strait Islander Peoples.



# what are regional university study hubs?



Regional University Study Hubs help students in regional and remote areas access higher education without having to leave their community.

They provide student support and campus-style facilities for students who study online.

There are currently 34 Regional University Study Hubs located in all states and the Northern Territory.

Isaac Regional Council has been working with the Country Universities Centre to develop a model to help establish and operate a Hub in Moranbah and Clermont.

Hubs provide:

Infrastructure, including:

- ▲ Study spaces
- ▲ Break out areas
- ▲ Video conferencing
- ▲ Computer facilities
- ▲ High-speed internet access

Administrative and academic support services such as:

- ▲ Developing writing and research skills
- ▲ Managing administrative processes

Student support services, including:

- ▲ Pastoral support
- ▲ Study advice
- ▲ Help accessing student services



# what is the country universities centre model?

The Country Universities Centre Model employs a network approach to delivering quality higher education into regional Communities.

The Centre's operate in an umbrella model, where each Centre who affiliates with the CUC is given access to the expertise and experience of the parent body.

Each Centre is technically owned, governed, and driven by its local community through an independent Board of Directors, however the network approach means Centres and students are collectively represented by an aggregated body which assists in overcoming the inevitable thin numbers in regional education.



Scan to visit  
Country Universities Centre's website



# how will a regional university study hub benefit the isaac region?



There's no denying that regional residents face greater barriers to accessing tertiary education options.

In fact, regional and rural students are 20% less likely to seek tertiary education than their metropolitan counterparts.

It is estimated that 90% of jobs in five years will require some form of degree or qualification, but the national job shortage has led people to seek employment over education.

With only 13% of Isaac residents having a bachelor's degree or higher level of education, the study hubs meet a demonstrated gap in support for higher educational and vocational study in the Isaac region.

They provide an opportunity for our community to enhance liveability, ease recruitment of staff and provide greater services and activities to partners and families looking to relocate to the region.

The Hubs will also be pivotal to reskilling workforces and supporting our communities in skills of the future across a range of industries including health, resources, renewables, agriculture, technology and critical minerals.





**MORANBAH** is one of the youngest towns in Queensland. Specifically created for miners and their families, Moranbah has grown into a town rich in charm and warmth. It is the largest community in the Isaac region.







# how are these study hubs funded?

The 34 existing Hubs were established with the help of Federal Government's Regional University Study Hub Funding Program.

Applications are now open for community-owned organisations to apply to establish a Regional University Study Hub in a regional or remote area of Australia. Up to 10 new Hubs will be established in this round.

Isaac Regional Council is seeking your support for an application to this new funding round to establish and operate Regional University Study Hubs in Moranbah and Clermont.

Partnerships between community, government and industry will be essential to the success of our application.




# how can business and industry help?

We hope you will support the funding application with a letter of support so that Isaac Regional Council will have the best chance of success in attracting resources under the Australian Government funding round.

If you have any further questions or might wish to consider sponsoring or contributing in kind to this project, then please contact:



**MAYOR ANNE BAKER**

 0408 277 379

 PO Box 97 MORANBAH Q 4744

 Anne.Baker@isaac.qld.gov.au

## LETTER OF SUPPORT EXAMPLE:

Dear Mayor Anne Baker

On behalf of <company name>, we are excited to support a game-changing opportunity for the Isaac region.

We provide this letter of support for Isaac Regional Council's application for Australian Government funding to establish and operate Regional University Study Hubs in Clermont and Moranbah.

Council has teamed up with Country Universities Centre (CUC) to develop a model for these hubs.

The CUC supports any student studying any course from any university or higher education provider, which encourages a diversity of degree pathways and vibrant regional learning communities.

This will enable students in the Isaac region to access and complete tertiary education without having to leave their hometowns.

These hubs will help reskill workforces facing end of mine life and support our community for skills of the future in resource renewables, agricultural

studies and technology and critical minerals.

The study hubs meet a demonstrated gap in support for higher educational and vocational study in the Isaac region.

This project focuses on supporting equity students within regional communities and those who have traditionally been excluded from higher education to ensure vibrant, diverse, and educated regional communities into the future.

The partnerships between Council and (CUC) is something that will provide an incredible bright future for a region that is in a transition.

We look forward to hearing more opportunities about the future growth of our communities in rural and regional Australia - especially the fantastic Isaac region which is home to Australia's largest coal mining region and to the second largest cattle herd in Queensland.

YOURS FAITHFULLY,

<your name>

<company name>



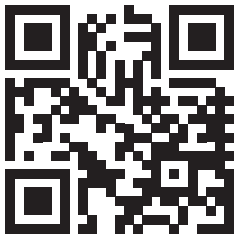
## OUR VISION

Helping to energise the world.  
A region that feeds, powers and builds  
communities, now and for the future.

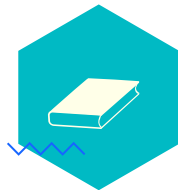


## OUR GOAL

To pursue long-term  
sustainable futures for  
Isaac's communities.



Scan to visit  
Isaac Regional Council's website



**ISAAC**  
REGION 

